

# FLUX EXHIBITION



Guy Shoham graduated with distinction from the MA programme at Chelsea College in 2001. He was then awarded a scholarship to attend the Drawing Year programme at the Royal School of Drawing. At Richmond College he was the Artist in residence for a year and has exhibited widely in the UK and internationally. He works from his studio in Brixton.

**FLUX EXHIBITION**

**WWW.FLUXEXHIBITION.COM**

**LISA@FLUXEXHIBITION.COM**

# FLUX EXHIBITION



Francesco Jacobello



# ABOUT FLUX

Now in its third edition, FLUX has established itself as the platform for contemporary artists to be discovered and to be part of an exceptional, unconventional art event. Also launching exclusively at FLUX is a new and exciting concept; Mini-Masterpieces where artists have created a smaller original for sale at £200 or less. Mini-Masterpieces is a great way for both new and seasoned collectors to purchase work from artists at a fraction of what their usual sized artwork is valued at.

Hosted by the iconic Old Truman Brewery in East London and curated by Lisa Gray founder of FLUX, this year's much anticipated exhibition, represents a rare opportunity to gain access to a diverse group of 140 artists on the path of being the big names of tomorrow. FLUX celebrates dynamic artists on the precipice of wider accolade and fame.

Gray says "FLUX is the size of an art fair but is a carefully curated exhibition. It is a unique experience for both artists and art lovers as we showcase a collection of the most talented painters and sculptors alongside site specific installations, performance and music. The support we have gathered from both the public and the art community has cemented our place in the contemporary art world and allowed us to be even more creative this year."

FLUX private view is widely known as the event to be at, where the evening comes alive with musical guests and performance artists which compliment the work and brings a new experimental approach to the exhibition.

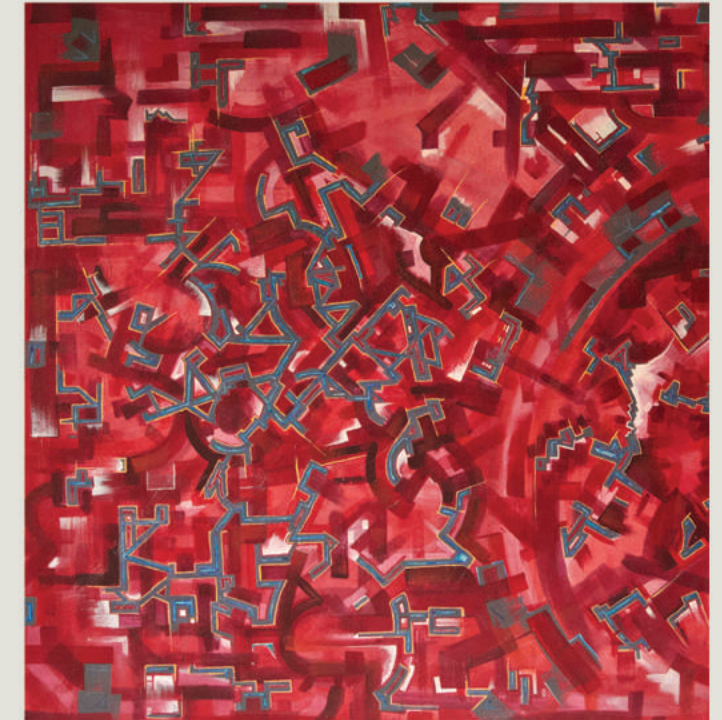
Please note the images shown in the brochure are not all displayed at FLUX but represents each artists body of work.



**Jaya Suberg**

Suberg was born in 1956 and has been living in Berlin since 1980. Her passion began after starting a journal, not satisfied with holding memories by writing she began to use her photos, newspaper clippings and paintings. In this way her love of collage emerged. Later Suberg gained knowledge of digital manipulation, this united with her prolific photography (Suberg always carries a camera) was where she found her powerful signature style. She now mixes photography, drawing, paint and digital to produce complex, surreal aesthetic imagery.

With pure emotion Suberg creates work inspired by the melancholy and the transience of life, the spontaneous expression of youth and the journey of life with all its mystery. This is work that is powerful, full of atmosphere with an instant, strong impact that draws you in and ensures you linger on the narrative. Dreams and reality are blended into one, dark themes and soft tones work in harmony. Memory and body, form and content, tension and sensuality are all perfectly entwined to create mixed media art that is breathtaking. This is art that you feel, art where passion and drama are a large part of the pictorial expression. Jaya's work is exhibited and collected worldwide.



**Luke Ginn**

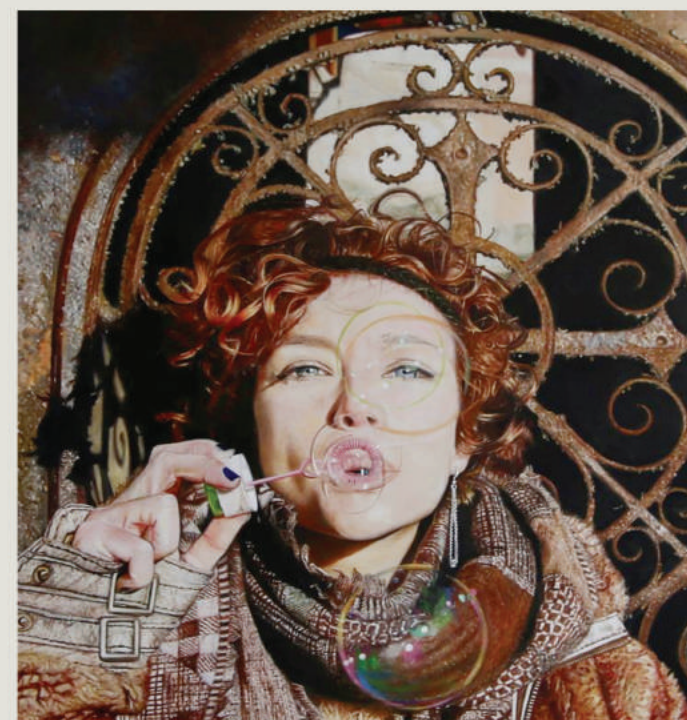
Ginn's choice of subject are physics, quantum electrodynamics and the limitations of human insight, this continuing body of work is based in the quantum world, of something being so small that it is impossible to observe. Something however mathematics and science can understand, and that reveals many of its properties. Physics "quantise" those properties and that in essence is what the work depicts. Choosing to see these objects not just as equations but as beautiful complex systems governed by countless variables. These are religious paintings, for the unseen unknowable building blocks of everything.





### Alison Johnson

Alison's work aims to have a sense of mystery and ambiguity, atmosphere and emotion play a major part too, this is derived from life experiences, memories and music. Often her work appears quite bold and simple from a distance but on closer inspection it becomes apparent there are far more complexities to the work, a comparison which can be paralleled to life. The techniques used in her work also follow the same theme, layering up translucencies of paint to create depth, then stripping back paint to expose the raw which are then worked back into again, producing interesting and complex results. Her brush strokes are sometimes gentle and soft other time fast and strong to create movement and this helps create such emotive pieces.



### Andrew Kinsman

Self-taught artist and musician Andrew Kinsman, sold his first piece of artwork when he was only twelve years old. He has painted commissions for celebrities and royalty alike, and has recorded soundtracks and albums with music novelties such as Noel Gallagher and English Rock Band, Kasabian. Currently living in North London, after years spent in Cambridge, Bath, Bristol and Cyprus, Kinsman continues to passionately practice both art forms, dividing his time equally between the advancement of his musical career and continuing to acquire new and reputable art commissions.

Eventually, it became apparent that Kinsman could no longer suppress his artwork for his music, realizing the necessity of both creative outlets in his life. He took up painting again, completing commissions for His Highness Sheik Mohammed, Sultan Al Thani of Qatar, Rolf Saxon, Eric Lanlard, The Hariri Family, Lebanon's most powerful ruling family. He was also asked to paint actress, Elisabeth Moss, while she was in London performing 'The Children's Hour', alongside British actress, Keira Knightley. However, his most prestigious commission was when he was asked by the Royal Mail to paint a series of eleven stamps to commemorate 150 years of League football including a portrait of Sir Bobby Moore.



### Aidan Andon

Through his painting, Andon is an artist who enhances black and white in such a particular manner that contrasts play their own game. In this game the light captures the elegance with its shadows and these shadows gently paint a glow.

Andon chose this as his style due to his inner vision reaching beyond colour. His canvas is a scale on which he uses only two notes - black and white. Just these two tones are enough to create countless visual symphonies signed with his name. His paintbrush ensuring his uniqueness comes alive.

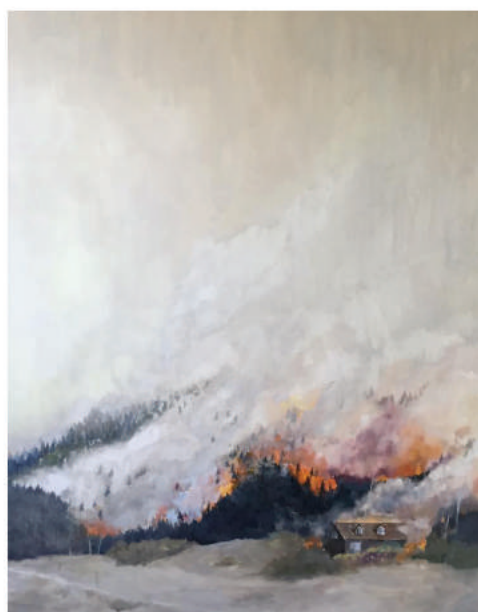
While working on his first painting, he discovered his keen interest in detail, this is the reason Andon paints portraits, being especially charmed by the human aspect. His original black and white technique makes the painting alive by intensifying the features of a face. His artwork shows the human in oil, but keeping the facts vibrant through light and dark.

Art is the light of humankind and Andon is the artist of lights and shadows in people.

# INSPIRING ARTISTS

### Adam Stockman

Adam makes paintings predominantly about the human condition, which sounds a little broad but it encompasses many of the subjects that excite him artistically. Adam is interested in capturing a feeling in the work, a sense of loss or fear or removing the human content in the landscape to produce a feeling of discomfort. Adam added, 'I'm interested in confronting the fragility of human existence, it's a subject that affects everyone at some point in their lives, from very personal experiences to seeing the tragedy that befalls people on a global scale. I want my work to be inclusive for people when they see it, for people to feel a connection to the image





### Arturo Garcia De Las Heras

Born in Madrid Arturo remembers drawing and painting from childhood. He received illustration and airbrush lessons at the Academy of the prestigious Illustrator Carlos Díez (famous for his pin-ups) and was formed in the technique of oil from two masters in Madrid and in London,

Arturo exhibits throughout the UK and Europe and his work is part of private collections in Madrid, Barcelona, Valencia and Toledo in Spain, as well as Mexico, Puerto Rico in U.S.A., Melbourne in Australia, and London.



### Caia Matheson

Caia Matheson is an Award Winning Contemporary Oil Painter based in the United Kingdom. Caia was born in Johannesburg and educated in Tokyo and London. She has exhibited alongside Billy Childish, Jamie Reid, Yohji Yamamoto and Sir Paul McCartney.

Caia paints with her hands and washing-up sponges onto canvases laid flat on the floor. It is a physical process. Starting with a specific colour Caia then introduces other colours and begins to build layers on the canvas. These layers are then scratched off and layered over again like a palimpsest literally meaning scraped clean and used again. Caia loves the idea of previous markings that are not visible but are still an inherent part of the composition. The layers are designed in a way to expose different subjects of the composition. These subjects are buried in the dark and light spaces and come out and disappear as the light changes presenting different aspects depending on shifting light conditions and mood.

Caia considers each successive layer a generation to populate or depopulate the canvas as needed and create her own world.



### Caroline Lowe

Caroline is a visual artist whose aim is to explore how we perceive 'reality' by asking the viewer to question and analyse what they are actually seeing. To accomplish this Caroline uses the materiality of paint and the illusion of the two-dimensional picture plane. Having always been interested in the theatre she sees the canvas as the equivalent to the 'fourth wall' of the stage. The divide between reality and the suspension of reality. Exploring what lies on the surface of the canvas and what can be interpreted by seeing through this as a facade.

Caroline has a passion for the physicality of paint and the illusion that can be created by its application; manipulating and editing the material, line, shape, light and dark, space and composition.

Her current body of work includes multiple editions from one source. In this instance the canvas and the oil paint have become equivalent to the photographic process. Capturing a moment by selecting and editing the image thereby referring back to this image but denying the viewer the complete picture.

# BOLD STATEMENTS

### Anastazja Markowicz

Anastazja Markowicz is a surrealist painter from Ukraine, born in Briceni. She has had numerous individual and group exhibitions, amongst others: in the National Museum in Lvov, Bucharest, and Kiev, where she was invited by the Ministry of Culture of Ukraine.

In 2007 she was awarded from a selection of several hundred artists from Ukraine, and her paintings were published in the "World of Iefkas" catalogue, under the patronage of the President of Ukraine.

In 2009 Markowicz started her studies on the Graphic Department on Fine Arts Academy of Jan Matejko in Cracow.





### Caroline Reed

Caroline creates art that is an exploration of childhood memories, trauma and emotions. With a fascination with the bizarre and the unusual which stems back to a film Caroline watched as a child called *The Freaks*. Remembering having sympathy with the individuals in the film, it had a profound affect on the way she viewed people who were different. This has, in turn, influenced her work creating assemblages that have a touch of nostalgia and a fragility to them. Making work that reflects the passing of time, creating a visual language out of her past, telling a story that suggests a narrative using metaphors and images offering the viewer their own interpretation and internal dialogue.

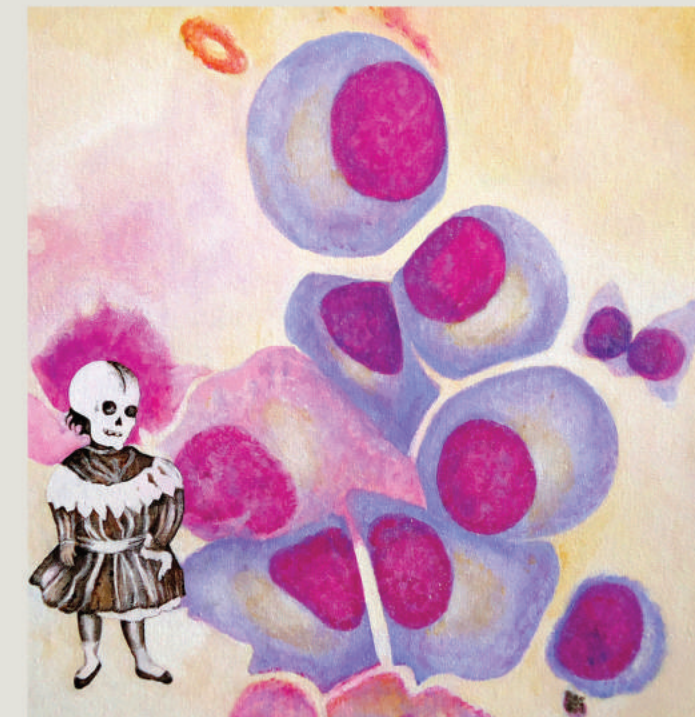


### Aziz Anzabi

Aziz Anzabi originally from Iran and London based, specialises in sculpture and painting. Anzabi's art has as the main concept myths and rituals. Exploring these aspects and aiming for an unconscious emotional state within the viewer, Anzabi's art takes form in both figurative and abstract styles.

"My ultimate goal is to have the viewer feeling a sense of familiarity with the work, a sense of having experienced this before." Anzabi's art describes a fantasy that shelters the individual in order to lead him throughout life. With strong surreal influences, Anzabi creates a universe proclaiming harmony.

Aziz Anzabi's work has been displayed and purchased worldwide, from UK, USA, Spain, Italy and Dubai. In addition, his work has appeared on National Stamps and he has written film scripts in the Middle East. Aziz Anzabi is also an academic, who also has written and produced books on the subjects of art such as mathematics, being previously a professor at Tehran University.



### Barbara Ash

Barbara Ash graduated with a Masters degree on the Sculpture programme at the Royal College of Art and was awarded the prestigious Henry Moore Fellowship from the Henry Moore Foundation, based for one year at Canterbury College of Art. She has received several Artists Grants from the Arts Council of England and was a recipient for the Year of the Artist Award and recently a "Judges Favourite" (Mary Allen; ex-Secretary-General of the Art's Council of England ) in the British Women Artist Annual 2015. She has shown across England and abroad, her work has been presented in solo and curated group exhibitions in U.K, U.S, Europe and Asia.

The last few years Ash has been based in Bristol, U.K and has a studio in Bangalore where she has been undertaking various projects/shows in India. She is currently collaborating with Katarina Rasic, a Serbian artist, to project-manage an ongoing initiative "Melting Pot" - showcasing paintings from 4 women artists, connecting artists and galleries from India to Europe. It launched in India in April and has visited 6 venues in 3 countries in the first year. The exhibition was recently shown in July in London at the Nehru Centre, the Indian High Commission cultural wing, and was inaugurated by Juan Cruz, the Dean of Fine Art at the Royal College of Art.

# MAKING AN IMPACT

### Antigoni Manolidou

Antigoni Manolidou received a BFA from the Aristotle University of Thessaloniki. She lives and works in Thessaloniki and has participated in numerous exhibitions in Athens, Amsterdam, Rotterdam, Vienna and Cyprus.

Her work is anchored in images of urban landscapes: Residential blocks, empty industrial buildings, internal spaces of unspecified use. My aim is to transform familiar settings into internal landscapes of stillness and void. Solid structures sometimes intermingle with less specified fields of improbability in order to emit a sense of unfamiliarity and alienation.





### Christopher Dear

Christopher Dear is a bold expressive artist who follows his own rules. After being asked to leave art school for his lack of conformity Dear has gone on to forge a successful career doing what he does best – being himself! Dear began art as a profession in 1995 and is now in his 21st year as an artist and more recently a fashion designer. Dear has exhibited widely in galleries, music events and public spaces all over the world.

Dear's style developed from his early career within the music industry. He produced large-scale artworks for music events and to this day his style works in tandem to music providing a multi level experience for the viewer.

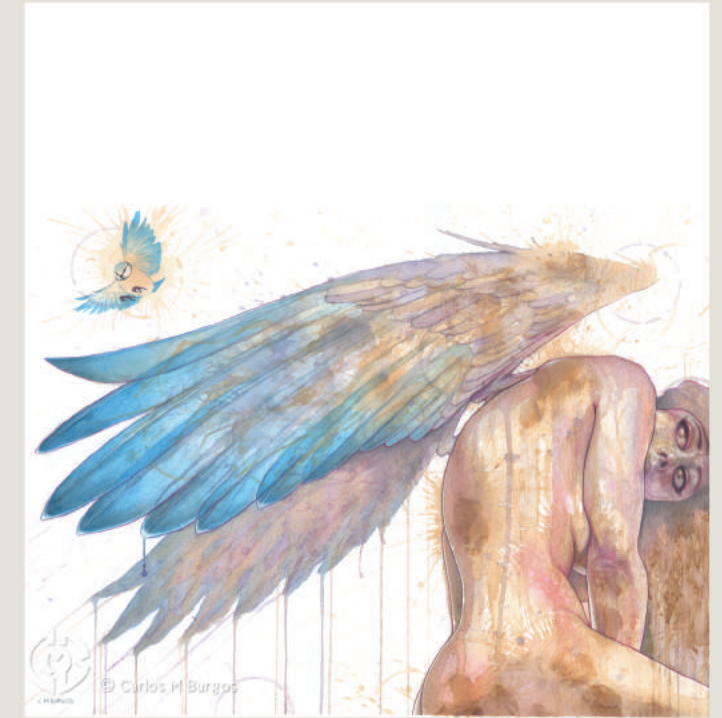


### David Booth

David is a sculptor and painter. He enjoys the creative process and, in recognition of this, deliberately selects processes which require him to make decisions intuitively and instinctively, trusting, evaluating, disrupting, destroying and constructing. This immersive process consciously and unconsciously absorbs him during the creation of the work. Producing the aesthetic of organic movement, fluidity, repetition, layers.

David exploits the philosophy of emergence in the way complex systems and patterns arise out of a multiplicity of relatively simple interactions; exploiting organic variance within an overall apparent repetition, selecting and discarding chance driven elements using wayward systems to create and challenge the work to emerge.

For Booth this keeps his personal practice vibrant, he thrives on producing a challenging response to material, space and context. Drawn towards repetition and multiples, creating movement and momentum. often exploiting the natural association of his chosen material to strengthen the context of the work.



### Carlos M Burgos

Carlos Martyn Burgos was brought up within two cultures - in the United Kingdom & El Salvador - that helped fuel and form his imagination and outlook of the world around him, his work shows the combination of these two worlds.

Carlos M Burgos is a figurative artist exploring aspects of the way we live and our emotions. But not necessarily the obvious outward appearances and goes on, but those within. An often surreal look of how we interact within this environment with traces of satire. Carlos offers an alternative glimpse of the urban world around us. Images that manifest themselves through our feelings, opinions and social environments but are not always acknowledged. A conceptual realism.

Presenting the world solely from a subjective perspective, distorting it for emotional effect to evoke moods or ideas, meaning or emotional experience.

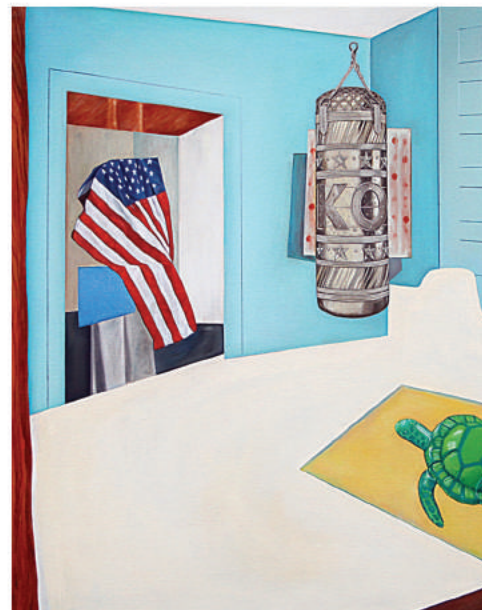
Drawing inspiration from social history, literature, music, conversations and general popular culture. Fusing elements of the classical, the expressive, the surreal, beauty, darkness and his love of the human form.

# URBAN REALISM

### Carl Anderson

Carl Anderson is a South London based artist. His works simulate hypothetical objects and interiors that are, more often than not, related to everyday paraphernalia and habitats.

He explores the relationship between how we view and experience the intangible reality of objects and space in an age dictated by technology.





### Eleanor Buffam

Buffam was born in Falkirk and grew up in Philadelphia. She has a BFA in Painting from Tyler School of Art, Temple University, having studied in Philadelphia and Rome from 1996-2002. Eleanor later studied at West Dean College in West Sussex, UK, from 2010-2012, graduating with an MFA.

Buffam combines photography and painting. Photography which has the ability to capture a fleeting instant in time, a moment that is soon lost forever. Painting then allows her to subjectively explore that moment, colouring it with memories, dreams, and hints from her own subconscious.

Eleanor exhibits worldwide.



### Charlotte Esposito

British visual artist Charlotte Esposito produces mixed media works that express both her own life journey as well as common major themes that affect us all. Esposito paints, sculpts and manipulates the surface of her canvasses using not only brushes but screws, credit cards, and other useful implements as her tools. Often using her design based past to create a compelling narrative Esposito conveys a particular time or emotion through her art. Her work is wide ranging and touches upon themes such as love and human connection, identity, femininity, the natural world, health, politics and spirituality. She has a major body of work that links to her own experiences of infertility and her material led abstract works skim across the boundaries of art, design, textiles and sculpture.

Esposito graduated with a Bachelor of Arts degree from Lincoln University and in September 2012 she was taken on by renowned West London gallery Debut Contemporary. Her work has featured in 'The Grove Resident' Magazine, London, and she was also selected by 'Stylist' Magazine to take part in their 'Women in Making' competition in association with 'Triumph UK'.



### Christel Roelandt

Belgian painter Christel Roelandt signs her figurative artwork by the name Chris R. A self-taught artist, inspired by all things beautiful –often by music and films, Christel started out with portraits of singers and musicians, their music or voice suggesting her colour palette and rhythm of the brushes.

Her favourite subjects are the human form: faces and nudes. She strives to emote her subject's mood and mind set and invites the viewer to see, feel, imagine, long for, connect...

The work is colourful and rhythmic with distinctive colour patches and shades, emotional and sensual. Portraits are based on black and white photographic material: this allows an instinctive and personal interpretation and association of the subject's "colours". Nudes are either sketched from live sitters or from photographic images. Jenifer DeBellis (Pink Panther Magazine,) says: "...The soft lines she lends to her paintings, combined with her intricate colour palette evoke woman's dimensionality –her curves juxtaposed with her strength, her satin skin in contrast with her steel set expression, her hopes toying with her deferred longings"

# CREATIVE MINDS

### Billie Bond

Bond is interested in the changing face of portraiture, the ongoing obsession of the selfie and the relationship between the subject's projection and viewer's perception.

She is inspired by portrait art of the past, from broken ancient artifacts to Old Masters, her work often involves destruction and repair, realism and abstraction, paralleling the process with altered states and adapted minds.

Bond tries to translate identity in such away as to draw the attention of an audience. An audience that will become part of the visual conversation.





### Josée St-Amant

Josée St-Amant is a remarkable talent who creates art that is packed with emotion, life and memories. A contemporary expressionist artist producing realism work that often displays a classical leaning. St-Amant captivates art lovers by the expressions and ability to depict feelings, the sadness, the anguish, the sentiment and her ability to emphasise. This is work that is profound in both meaning and interpretation, work that needs to be lingered upon. Figurative studies that embrace a moment, capturing the essence of time



### Gianluca Pisano

The focus of Gianluca's work is divided between the human figure and the landscape, each re-interpreted to include contemporary themes. For instance, worked canvases are concerned with the abstract shapes and surface textures of the painting as object, whilst the dark content of the paintings is concerned with the intensely human condition of being situated in a strange world.

The use of dramatic illumination affords the paintings an air of mystery. Mystery is powerful in attracting the human mind, leaving the narrative incomplete so that the spectator is puzzled or left in a state of wonder. More broadly, the contrast between light and dark suggests the difference between that which we know and are, therefore, able to contain and control; and that which lies beyond our present epistemological capacities. In philosophy, the enlightenment promised illumination.

Gianluca's paintings are redolent of our place in the shadows, afforded as we are glimpses that seem to make momentary sense of our place in the scheme of things. Gianluca is a modern master with a unique take on classical technique.



### Diogo Duarte

Diogo Duarte is a London based Portuguese artist, specialising in self portraiture and psychological portraits. His background in mental health and bereavement support enables him to create outstanding imagery that goes beyond the boundaries of traditional photography.

Whether Diogo is working on his own personal Fine Art projects or with individual clients, his unique perspective and personable approach always reveals substance and depth by utilising in his practice story telling of human psychology at its best.

Buses, train platforms and e-cigarette breaks tend to be his most comfortable place to create. It is usually in those places that he zones out and gives his mind freedom to express itself, though he's had some great ideas during boring conversations. Most of his ideas arise naturally in the form of intrusive images, which then add to or take away from the development stage.

# PERSONALITY IN ART

### Damien Frost

As most of central London closes down late at night and the crowds head home, there are a select few who come out only after midnight. These 'Night Flowers', as they refer to themselves, encompass a loose-knit community of drag kings and queens, club kids, Goths, alternative queer and transgender people, fetishists, and cabaret and burlesque performers – all of whom bloom late at night and burn brightly under the city's neon lights. Damien Frost's arresting photographic portraits capture those who dwell on the fringes of nightlife in modern London, dressing in all manner of guises. The portraits are the result of a project begun by Frost in 2014.







### Gillian Hyland

Gillian Hyland is an image maker; she personally composes every aspect of her pictures.

Since 2007 Gillian has been living in London. This period has seen her create imagery for fashion shoots, commercials and advertising campaigns for a range of high-profile international clients and brands.

This diverse background helped her develop a passion for making images, which evolved into her own distinctive photographic style. Gillian first released 'Words in Sight' in 2014; since then her photographs have been exhibited around the world and received several awards.



### Gordon M Scott

Since graduating from The Glasgow School of Art in 1986 Gordon has exhibited widely and continued on his artistic journey. His work displays narrative and figurative realism with themes depicting the wilderness of nature, journeys travelled and adventure. Rugged landscapes and a leaning towards myth and folklore is often a backdrop to Gordon's work. What we love about his artwork is not just imagining the story behind the images but what is happening next. A depth of colour and layered detail all add to the atmospheric beauty of his art.

His technique has changed over time. The vigorous, thick paint of earlier work in his 20s, where an art critic described it as, coarsely massive and sinister, has now given way to a refined realism. Clearly influenced by Classical Italian Mannerism and 19th century Romanticism, we asked him recently why he has had such a tenacious interest in narrative realism, he replied, "Realism has always been the most immediate way of transmitting ideas and symbolism. I'm a helpless observational realist...always done that!"



### Gregory John Ford

Gregory John Ford is an artist based in North Devon working in three main areas: sculpture, glass and paintings.

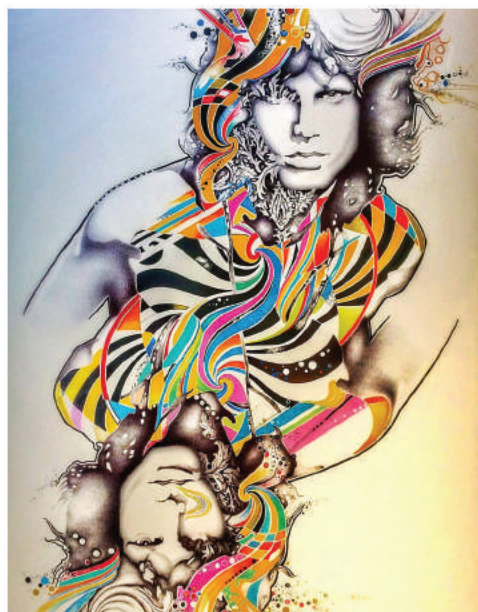
A passion to create has been with Greg as far back as he can remember, he grew up in extremely creative and well resourced surroundings and has gone on to develop his own creative environment.

'I use a wide range of materials and skills to make my sculptures. There is one material which is very important for me, glass and the effect that light has on it, giving highlights on the form which I feel gives life to the sculpture. Like the effect of sunlight on a stained glass window. Each sculpture has its own journey to take, spans a period in my life with its own set of influences. Another important factor for me is the scale of the sculpture and its impact on the observer and the space it fills. Some of my figurative sculptures are loosely based around angel forms, this is something that I have been drawn to since my very first sculpture. Someone once said 'You are an angel maker', this thought has stayed with me. I try to create something that has a figurative presence and an impact on the space and people in that space' Gregory

# EVOCATIVE ART

### Francesco Jacobello

Born in Militello in Val Di Catania, Sicily, Francesco Jacobello grew up surrounded by art and artistic expressions. These external circumstances have helped shape his art practice by simultaneously allowing for his own personal and artistic language to develop. A core inspiration behind his works comes from the personal connection with his environment, and especially the wish to immortalize expressions and feelings that draw oneself to people, places and situations. Jacobello has exhibited in various venues in the UK and Europe and his works are part of public and private collections around the world.





### Harriet Hoult

Harriet Hoult is an abstract artist based in London, with an instinctive approach to her work. She works mainly in acrylic— both tube and spray paint— and also uses collage, oil pastels and watercolor.

“I tend not to plan,” Harriet says. “I have an image in my head as a starting point and I make some marks in the direction of that original idea. Then I feel my way to what the next set of marks will be. It’s a moment-by-moment evolving process. I am inspired by the everyday, often random things that I see and experience in the world around me; the way the light makes a particular shape on a wall or a fallen leaf on the ground”

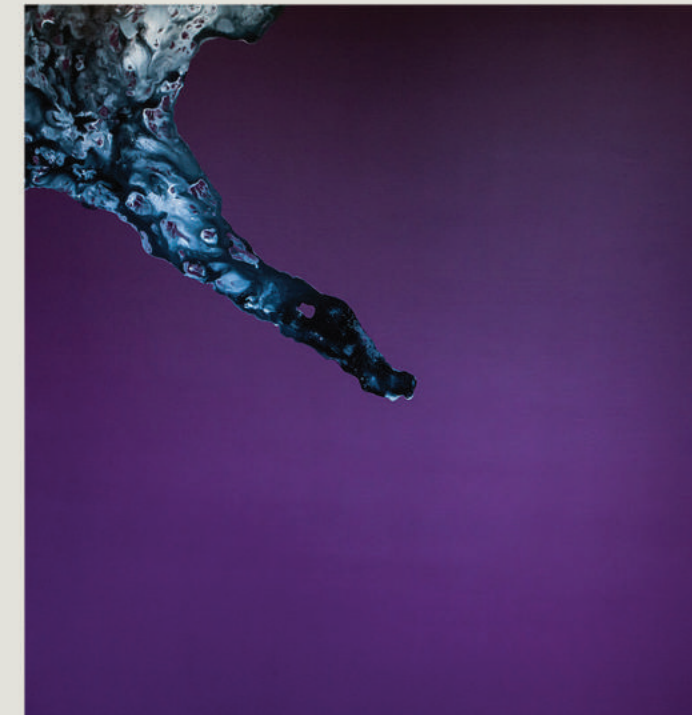


### Ben Rice

Rice has been a photographer for as long as he can remember. When he was five Rice borrowed his dad’s camera and took a picture of some pink lupins in the garden. A week later, the envelope arrived back from the chemists and he could hardly believe the magic; the flowers were alive on the print but dead in the garden.

Years later, after art school Rice experimented with many camera techniques before becoming a photographic artist. He has travelled to nearly 60 countries in pursuit of the perfect location, always returning to his studio in London. Current projects include the creation of very large - up to 4.2m. wide - prints, drawing on nature’s poetic reclamation of dry stone walls, which when viewed close-up offer a clarity of detail far beyond the normal gaze and a series inspired by observing the nuances of Japanese culture through the prism of the elegantly placed bicycles.

In many of his photographs, Rice concentrates on only two dimensions, confining his vision to the width and height of the subject. Of course, taking pictures in a 3D world, he cannot completely eliminate depth, but most of his images portray a ‘flattened’ version of what he sees



### Dean Rossiter

A multidisciplinary artist, Dean Rossiter works through modes of process painting, conceptual installation and photo realist drawing as a means of answering compelling questions that are deeply vested within our Contemporary paradigm. The works of Rossiter are all connected by a deeply philosophical and curiously investigative approach to Art making. For the artist, mediums are seen as expendable tools of investigation, as such the work of the artist is rich in diversity, skill and approach.

Having been born after the creation of the internet and having grown up through the digital revolution, Dean’s current paintings highlight the paradoxical impact digital technologies have had on the current generation. These paintings bring into question the adverse effects these digital worlds are having on modes connectivity and socialisation. Rossiter is a nationally exhibiting artist that’s establishing a presence internationally and has been reviewed by the International confederation of Art Critics, who quoted him as being, “A young talent who is undoubtedly interesting and well worth keeping an eye on.”

# EVOLVING PROCESS

### Britta Hagemann

Hagemann is a Fine Art Photographer, based in, Switzerland. Exhibiting in Switzerland, Germany, and Singapore since 2008. Drawing upon her background in Psychology, Hagemann’s work centers around the interconnectedness of the visual and emotional in the everyday: whatever the geographic location or apparent banality, some subject matter, especially when transfixed by light, has the power to uplift us, to transport us into a sublime state, or unsuspected place within ourselves. It is this experience of sudden awareness that Britta shares through her work, playfully inviting the viewer to reconnect with life’s energies: melancholy and joy, longing and wonder.



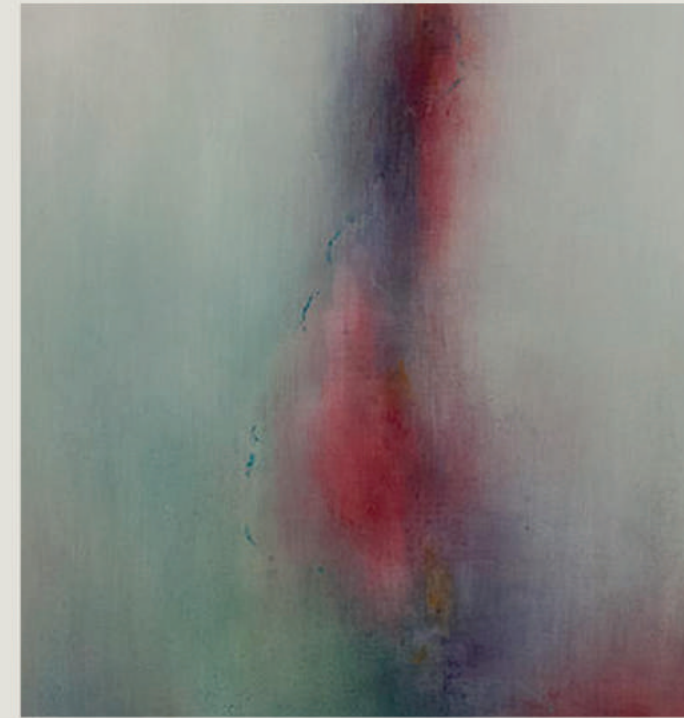


### Bruce Mahalski

New Zealand artist Bruce Mahalski has had solo and group exhibitions of his art work in a range of media including screen-printing, photography, painting and sculpture since 1996.

In 2005 he made the first bone gun for an anti-war exhibition called Full Spectrum Dominance and by 2010 he had begun to specialize in his trademark textural bone sculptures.

He sells work all over the world and accepts commissions. You can visit his studio at 'Nautilus' in Owhiro Bay on the South Coast of Wellington.



### Junko O'Neil

The foundation of Junko O'Neill's work lies in the Japanese spatial and temporal concept of Ma, in which space is considered to be fundamentally void. The concept considers negative space as having a form of existence, with space perceived alongside time. It is neither time alone or space alone. O'Neill expresses this concept both in her figurative and abstract work.

With her figurative paintings, she often places a figure viewed from the behind in the forefront. By giving the subtle suggestion of passing time, she paints the air within the surface in a way that emphasises the space where the figure occupies. The inspiration of her figurative work is often drawn from literary pieces, especially Japanese novels such as those of Haruki Murakami.

As part of the painting process, she sometimes writes her own poems in response to the original novels or in response to her own painting. Most of the poems are short and concise, not dissimilar to that of Haiku poems. Like her paintings, she provides minimum information to the reader, who is encouraged to read between lines.



### Karen Eames

Is based in Brassey Road Studios Winchester, studying Fine Art at Winchester School of Art and Design. Eames began at art college as a painter and had the opportunity to develop her art practice in many different mediums, in addition to installation and multi-media work Reed continued painting a variety of subjects.

Her passion for painting has continued to develop work that is often described as dreamlike with a whimsical edge. She describes the process as allowing her to explore her life, the paintings are often related to personal visual experiences which becomes richer, deeper and fuller as the painting develops. The marks on the canvas are multi layered as she draws on layers personal life experiences and feelings from reality and dreams.

The work often relates to landscapes, skies and the countryside things that are part of a personal journey and history, the work embraces life experiences from both the past and present, exploring memories and trajectories of the everyday life.

# RAW BEAUTY

### David Fines

David Fines, is a British contemporary artist, who works from his studio in Hampshire. He graduated with a Fine Art Degree (BA Hons) from the University of Creative Arts (UCA) in 2014. Fines, considers that his practice is multi disciplinary both in terms of his medium and his subject matter, preferring to allow his practice to be one of open questioning of possibilities. Recent works have included references to the decline of Britain's industrial centres and the socio economic impact of redundancy, 'Big Pharma' and Japanese cultural practices; he also produces abstract figurative works. Fines incorporates natural, manmade, as well as found objects in his work.





**Frances Bloomfield**

Frances Bloomfield has established a strong reputation as a contemporary artist working in a broadly surrealist tradition. She is represented by a number of UK galleries and has exhibited widely in Britain and in Europe. In 2015 she was selected for Aesthetica's long list. She has had work included in the London Group Open and the East Sussex Open. In 2015 and 2016 she created the design concepts for the Gebruder Thonet Vienna exhibition stands at Salone del Mobile.. Her work can best be described as a series of fascinating dreamscapes exquisitely created in three dimensional collage. Each piece is like a small theatre set which plays with space and perspective to draw the viewer into the curious worlds she creates.



**Darren Baker**

Baker is a renowned artist that has been commissioned to produce portraits for HRH Prince Charles and Tony Blair, which hang in St James Palace and Downing Street respectively, and has now produced a wonderfully detailed portrait of Her Majesty the Queen; an accolade accorded to a very small number of painters in the monarch's lifetime.

Darren graduated from Bradford Art College in 1998 and quickly rose to fame exhibiting widely with shows throughout Europe, Japan, North America and the UK. He has also developed an impressive portfolio of sports portraits for clubs and personalities alike, with his appointment as official artist of The Professional Footballer's Association (PFA) affording him considerable recognition within the celebrity industry. Darren Baker has subsequently produced portraits for other sporting personalities including David Ginola, Peter Schmeichel, Henrik Larsson, Prince Naseem, Nigel Mansell and Jonny Wilkinson, and PFA Footballer of the Year portraits of John Terry, Steven Gerrard, Ruud van Nistelrooy and Teddy Sheringham, as well as a tribute to ex-Huddersfield forward Frank Worthington, based on black and white photographs of the player.



**John Clare**

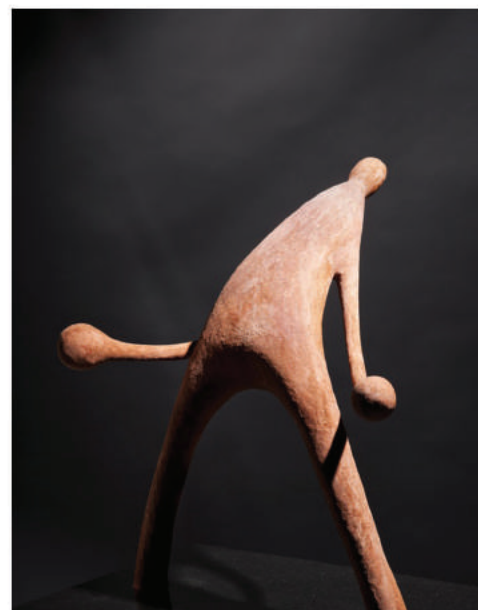
John Clare a South London artist who is now living and breathing his art in New Zealand. John could not have moved further away from his London roots, a place and a time that was riddled with excess and the hard truth of a life that was sunk into a scene of drugs, murder, suicide, demons and a questioning. There's always been a constant in John's life and that was and still is art. Creating art to tackle the emotions of death, depression, addiction, love and life. Artwork that is violent, energetic often ugly but all in a thought-provoking, exciting and distinctive way.

A love of family, a natural worry regarding the fragility of his children's minds, a world full of beauty a frightening, discoverable place and a need for eternal life are often themes but not in an obvious way. The lessons learnt, the fears and the pleasure of living are depicted in what can feel uncomfortable, raw and horrifying. John's work can be autobiographical in artwork such as 'Sorry but the lifestyle you ordered is currently out of stock' which features the pain and horror of South London and a pathway to another life.

# COMPLEX PROCESS

**Jo Hatty**

Jo Hatty is an Irish sculptor/artist that has certainly made a mark, both in the arena of site specific sculptures and the personal work that is becoming the focus of her immense talent. Jo achieved her first Public Art Commission, for Netherleigh House, whilst still at College in Belfast then continued to create public work throughout her career. Much to our delight Jo's current work incorporates smaller scale sculptures and jewellery that can be loved and admired personally. An artist only defined by her exploring creativity. Jo's bronzes are certainly distinctive with their boldness, their beauty and soft curves, a strong sense of abstraction and emotion.





### Eleanor Langton

Langton's vibrant and quirky still-life paintings are investigations into the value we place on objects; whether they are sentimental treasured objects, disposable coffee cups, or flowers that will eventually wilt.

Langton sees beauty in these objects and aims to convey this joy through bold colours, patterns and perspective. Textile patterns, furniture design and vintage objects from the mid-century era are inspirations in Eleanor's work.

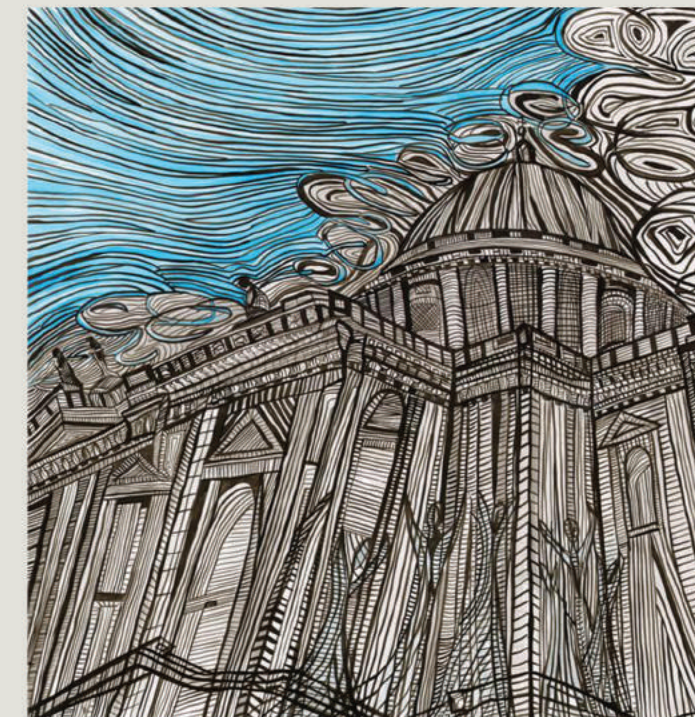


### Keith Newlove

Keith Newlove is an artist/sculptor specialising in contemporary figurative sculpture. Since graduating his BA Fine Art in 2013, he has exhibited in London and Derby. His work is semi biographical, taking elements of his own experience along with current events and stories from the media. Using just sections of the body sculpted by hand along with found objects, Newlove strives to produce a narrative that is both personal and universal.

Keith's initial motivation to create his collection of disembodied limbs was derived from the Salish Sea human foot discoveries where human feet have been discovered on the coast with very little explanation! Primal sensibility mixed with an urban responsibility to donate art to a wider audience. An artist who like Banksy is leaving his mark, dropping his stunning artworks at various locations throughout the UK for anyone to discover and own for free. Distinctive, contemporary, and very memorable!

There is a reasoning to his creativity, everything about Keith, his artwork, his style and his ambition is exciting! He produces work that is raw, edgy and appealing on so many levels.



### Kerry Zacharia

Kerry Zacharia is a London born artist with Greek-Cypriot origins. She displayed creative talents at an early age, but for one reason or another her career took on a different path. However, her passion for art long remained and she now has an established following and exhibits her work primarily in London. Kerry is best described as an abstract expressionist artist that is largely inspired by her environment and from within. Her vision is translated with lines, fine brush strokes, patterns and a selective range of colour, painted in ink on paper.

The intensity of the art some times enables Kerry to hide mystery images that once seen by the observer is always seen. Furthermore, Kerry chooses to work in ink as she likes its fluidity and transparency but it is unforgiving and this only further adds to the challenge of her work.

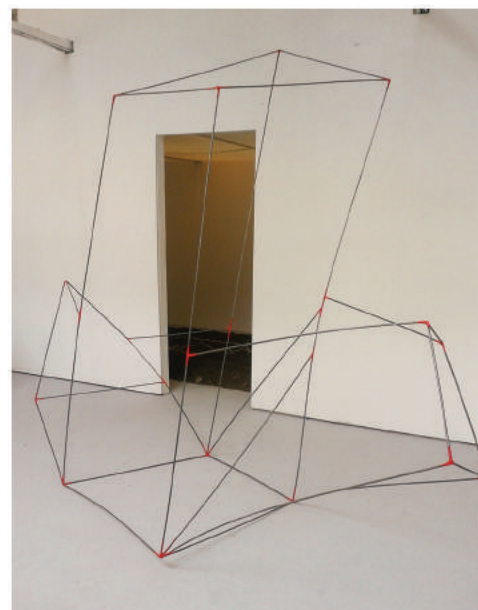
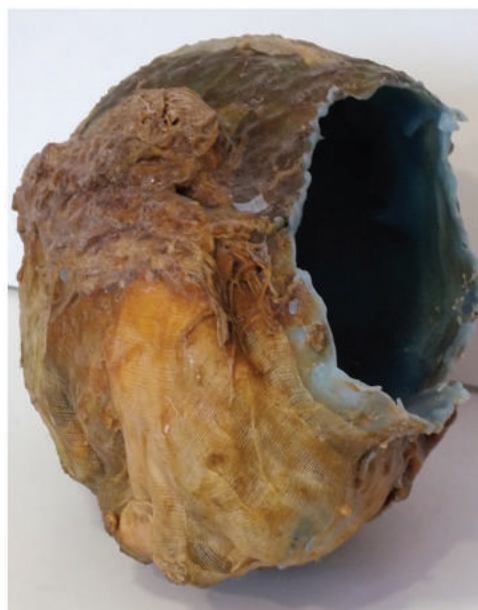
# IDEAS AND IMAGES

### Joshua Vaughan

Joshua's practice is driven by an appreciation for all forms of making, and an engagement with the qualities inherent in the varied materials he uses.

The process of making work is often revealed in the finished pieces he makes, and his practice is supplemented by a theoretical approach which helps inform the development of the work.

Joshua is inspired by a whole smorgasbord of media, ideas, images and forms. Theory is, however, totally subordinate to the joy of making.





### Edie Jolley

Jolley has successfully exhibited within the UK. Having lived for many years in the Pennines Jolley has been inspired by the surrounding landscape to produce work that responds to the sense of alienation and bleakness it arouses. Using a variety of techniques as a starting point - collage, print or the application of fast-drying media such as acrylic on paper rather than having a visual end-point in mind, the semi-random nature of the initial marks guides the later brushwork. The process is deliberately opaque and seemingly without a conscious objective, but through a process of revisiting and reappraisal of each piece, the image eventually emerges.



### Laura Iosifescu

Iosifescu's art goes beyond the canvas. She understands paint as more than a means of creating the image. For Laura paint is a medium unto itself; malleable, indulgent and to be sculpted in line with its free, playful spirit.

Iosifescu's unique 3D paintings bridge the gulf between the fluid, graceful movement of dance and the stillness of traditional painting; creating her own art which Iosifescu describes as "Performance Paintings". These works are not defined by the theatrical performance of the artist, but rather each piece takes its lead in the action. In Iosifescu's 3D art the work undergoes a radical transformation; departing the realm of the passive object to greet the living dimension of the active subject.

In Iosifescu's art, paint acquires new dimensions and visual qualities to create a momentary world which has no boundaries. The paint is no longer mere material which sits on the canvas passively waiting to be seen. The paint becomes a 'living' object, a part of the experienced world which reaches out and grabs attention. The juxtaposition of this blurred relationship between the art and the artist.



### Laurent Muller

Two points create a line, and every line tells a story. The story of Laurent Muller began in Provence, the last of five children in an artisan family of Irish and German descent. Surrounded by craftsmanship - his mother a baker, his grandfather a fabric weaver - he developed a passion for design and an understanding that art could give a voice to the disenfranchised, free the enslaved and remember the forgotten.

His deconstructionist ethos uses design to explore the contemporary human experience. The beauty in the banality of our everyday lives - the celebration of our innocence. The duality of appearances - the contrast of perception and reality. The layers of sexuality that divide us - and unite us.

The tradition of the Arts Decoratifs and designers such as Jean-Michel Frank, Charlotte Perriand, Le Corbusier and Jacques Adnet all influence his work. He is driven by a desire to challenge traditional notions of the boundaries between art and design. His work embraces playfulness, purity and elegant minimalism, with a focus on aesthetic, while remaining purposeful.

# ABSTRACT CONCEPT

### Laura Elliott

Laura is a contemporary, multi-media artist who is passionate about mixed-media painting and creating metal clay designs with genuine gemstones. Such as Ruby, Garnet, Emerald, Amethyst and Apatite.

Laura's designs both explore colour and form where one informs the other. She always had the desire to explore new techniques and media which is why Laura's work has and always will be progressing.

Laura's artworks are displayed in private collections worldwide and have been exhibited within exciting group and solo exhibitions.





### Lee Ann

Lee Ann is fascinated by the human experience. These traces of space and time, in both the subjects and her own life, are captured and preserved in the moment in an abstracted view for reflection. Lee Ann's present work considers the skin's surface and texture. Each portrait is a 'trace of time' in the subject's life whilst also linking the subject to me, in my present moment. Skin is seen as a landscape, a cartographic map of an individual's life journey and existence. Each line and scar becomes a Memento Mori, whether the palm of the hand or the back of the knee, the lines reveal a unique narrative of each subject's personal history and yet also represents the inescapable fragility of every human.



### Lesley Oldaker

Lesley Oldaker is a Swiss based visual artist, who has exhibited in the UK, Switzerland, China, Italy, Bratislava and USA. The work observes and explores through painting, the transient nature, purpose and interconnecting relationships of random moving figurative groupings and their interaction within the public space around them. Examining and incorporating the current social, political and religious conditions surrounding us today, creates a narrative statement within the work and by expressing a personal response to co-occupying the space communicates a common sense of displacement and a question of belonging and relevance within that space.

The process originates from drawing, photographic and printing studies, enabling the abstraction of the essence of form, space and colour for the paintings. Oil paint, the main medium, communicates more desirably the sense of continual movement and fluidity of the form within the work. Painterly mark making and a limited colour pallet further evokes the suggestion of mood and place, and encourages the viewer to explore further their own personal inner reflections and relationships with the forms and open spaces of the painting.

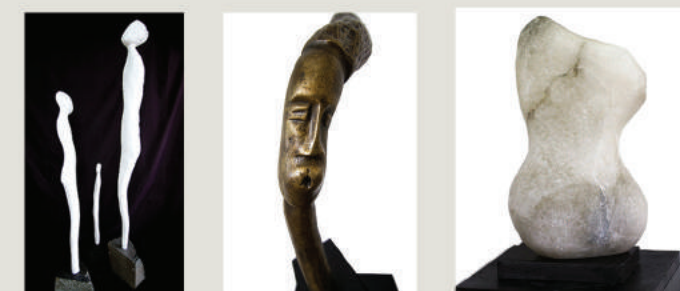


### Linda Lipinski

Linda works with a variety of media including wood, stone, sand, cement, plaster and clay. Linda starts by modelling from live models and many different poses, the models are male and female and all different shapes and sizes. Her emphasis is on poses always consisting of backs. Linda has a fascination for the sweep of a back and the curve of the spine.

Linda moved on to carving in wood. The grain and different textures of the wood often give surprising finishes and beautiful patterns from the grain. Often Linda's sculptures are created from tree branches working with the shape with no knowledge what it will be until it is finished.

Linda has been a sculptor for over 35 years and exhibits regularly across the UK. Linda studied at The Institute in Hampstead Garden Suburb.



# HUMAN FRAGILITY

### Krzysztof Heksel

Heksel has been developing his talent from the earliest age and shared a passion for art with his father. The first discoveries in Krzysztof's journey of creativity were marked by pencil sketches, but he soon moved on to experiment with watercolor and acrylic painting, to finally explore the secrets of oil painting, which became his favorite technique. In the early years the artist was inspired by the works of authors such as Hieronymus Bosch and William Turner. But the turning point of Krzysztof's artistic development was the moment he came across the works of a Polish painter – Zdzislaw Beksinski. This artist has become the greatest inspiration and a true paragon of craftsmanship for Krzysztof Heksel.





### Jasmine Pradissitt

Pradissitt is a painter and physicist who sculpts in light and plastic. A practising Quantum Artist living in South London, with a Ph.D. in the Rare Earth Doping of Semiconductors from UCL, she has also studied art at Goldsmiths and London Metropolitan. Light, dual in nature, stimulates sight making things visible and casts illumination by divine truth. Currently, her work focuses on the era of fossilised fuels and the plastics with which we are changing the very surface of our plane, as we enter an Anthropocene age. Using the laws of pattern in both science and the environment, she is exploring the fleeting resonant chords of our consciousness to the natural world and our bodies.



### Delphine Lebourgeois

Delphine Lebourgeois studied Fine Art in Lyon then went on to complete a Masters in Illustration at Central St Martins in 2005

Lebourgeois works in various medium including digital, collage, pencil, pen, ink, watercolour and screenprint . Her most recent work draws from various stylistic sources (ranging from Botticelli to comics) mixing symbols and cultural references in a playful and sometimes irreverent way

Echoing the recent events in France, Brussels and all over the world, her latest collection "Heroes and Villains" looks into the fragility of innocence and how young people in their desperate search to belong can turn to an extreme form of comfort. The collection of works is still in progress and will be released in its entirety early 2017.

Delphine Lebourgeois was the winner of the Images 29 Critics Award. She has worked for an extensive list of prestigious clients including The New Yorker, L'Obs, Le Monde, Harper Collins and her work is shown at international art fairs in London, New York, Singapore and Hong Kong.



### Gayathri Sathyanath

Living in the green county of Hampshire has allowed Sathyanath to be exposed to and immersed in the colours and bountifulness of nature. The ever-changing colours of the sea, rich greens of the fields, and the colourful landscapes all inspire her to create resin paintings. The free-flowing nature of the resin helps to capture the colours and constant movements in nature.

Sathyanath has always had an inclination towards abstract art, although she has dabbled in a few landscapes and portraits, her heart always leans toward abstraction!

Sathyanath's paintings are created using clear epoxy resin mixed with acrylic inks, dyes and pigments, depending on the details she wants to incorporate. She uses resin mixed with pigments and then allows the layer to dry. The next layer is composed of detailed work either in acrylic paint or ink or gel pens before adding another layer of either clear resin or coloured resin. This process may be repeated if greater depth is required. The paintings are created either on wood or canvas. Due to the nature of resin, each painting is unique. Working with resin can be quite messy, but very satisfying and rewarding!

# DREAMLIKE IMAGERY

### Jessica González Prados

Jessica González Prados obtained a Master in Arts . Awarded with the medal for Fine Arts to the best master academic record 2013-2014, she is a current member in the Group of the Drawing. She has been published in "FLAMANTES. Book of artists: Artists under 35 years", which aims to give visibility to a group of artists from around the world. She has also participated in important pictorial and illustrative projects and performances, and has illustrated two books. The Abartium gallery , in which she has participated with a group exhibition, states: "Gonpra's artworks stand out for her social protest resulting from her emotional commitment in Human Rights defense".



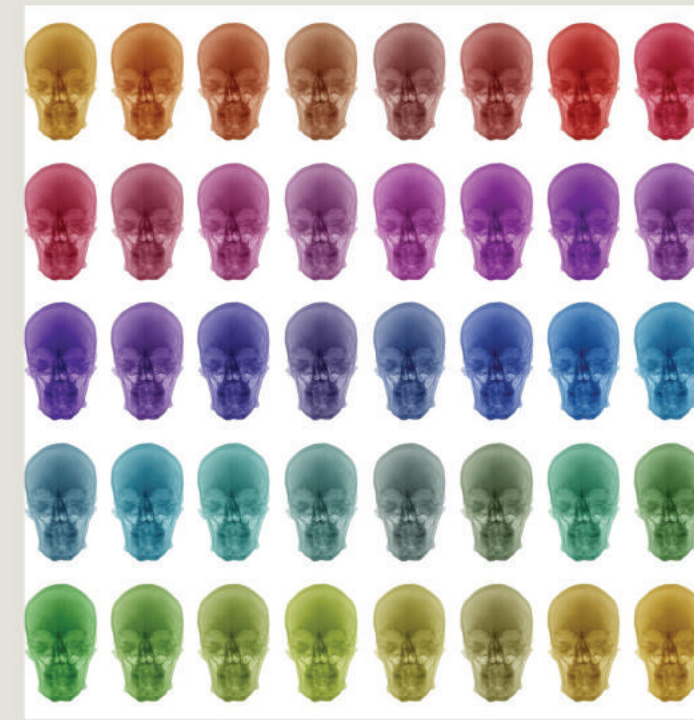




### James Boman

James Frederick Boman, born and raised in East London, is an assemblage artist with a sculpting studio in Hackney Wick. Influenced by artists such as Jean Tinguely, Heath Robinson and Kris Kuksi. Boman is best known for his sculptures made from found objects and mechanical components.

Boman makes machines that do not work (at least not in the traditional sense). 'Art is a machine that moves in a different way to the one we understand, art is an idea and the art object is a vessel to carry that idea forward'. Boman is interested in the transition from material to artwork and using mechanical structures he explores the pre-conceived ideas surrounding function.



### Ernesto Romano

Ernesto's work mostly involves plants with flowers and human anatomy (medical records or devices, prosthetics, old anatomical charts, human skin etc), but some of his latest works just use medical records on their own, or just plants on the other side. The combination of nature with medical records and technology applied to the medical science is his way to reflect on the condition of being human and the effort to explore what we do and why we do it, and to push the powerful tools of human mind.

His work is mainly focused on the individual, the person as a human in this world, and it always divides the ego into matter and mind, the material and the spiritual part of what is the every day life.

The big questions always relate to these two inseparable sides of being human.

Current works in progress include a 3d model of his brain and colourful patterns using leaves of Ginkgo biloba, a plant that survived extinction and also Hiroshima bombings. New works involve the use of diamond dust on prints of his own X-rays.



### Marcus Jake

Marcus Jake is a UK, Bristol and London based artist. Working in a mixed medium environment, often using photography as the cohesive element.

His work is a reflection of his life story, trying to capture those significant moments of the parts that make up the human experience. The results are generally emotion drenched pieces of work, touching on sadness and heartbreak but also capturing the beauty that is life. No matter how exposed the original subject matter is, whether it is a narrative about addiction or grief, you will often find a sense of hope, a reflection of what comes out of this place; strength, beauty, connection and courage.

Browsing through his photography work you could mistakenly think that a heavy use of photoshop has been used. This is not the case, he prefers to create all the effects at the studio stage.

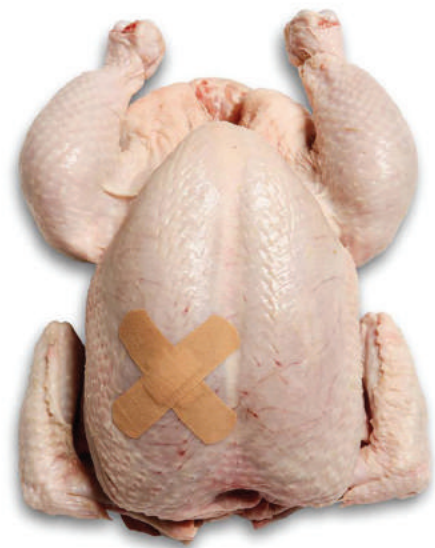
Although an avid analogue film camera user, he believes digital has a perfect place in his work and chooses to use both depending upon the idea or project.

# MODERN VISION

### Julian Hanford

Julian Hanford is a conceptual artist whose work primarily utilises the medium of photography. Sometimes narrative, often confrontational, his work forces us to consider the underlying dichotomies and ironies behind the veneer of the civilisation we have created here on Earth.

His influences are as diverse as his subjects, from Stanley Kubrick and David Lynch, to Jeff Koons, David Shrigley and Martin Creed.





### Mark Lloyd

Mark Lloyd began his career as a graffiti artist in the mid 1980's. He went on to study fine art at Falmouth School of Art, the Slade School of Fine Art, and Winchester School of Art. Mark is an artist that is not shy of addressing topical issues and philosophical ideas. An artist that is bold, expressive and always willing to create work with drama and impact. The concept, ideas and his subconscious metamodernist realism, certainly displays sincerity, a narrative and hope! Addressing heavy themes such as searching for God, the advancement of humanity and cultural identity Mark is an artist that communicates through his creativity. His mind is open, inquisitive and constantly evolving.



### May Everett

May Everett studied Fine Art Painting at The University of Brighton and has since participated in many collaborative group shows, London art fairs, and open house exhibitions. She had a successful solo show in 2014 and has produced several private commissions for both UK and overseas clients. Everett also teaches in London and is engaged with creative arts education at A Level and beyond.

Everett's work explores relationships between the figure, space, and environment. She is interested in the presence of the human form, how we inhabit space: grouped, alone, suspended in a moment, or moving and melding together. Faces and features shift and dissolve as the figures become abstracted through an interplay between colour, surface and light. She combines snapshots of a sometimes beautiful but also destructive world with an inner library of memories, patterns, and motifs. The figures become linear and at times transparent, behind which exist a subtext of relationships. Any implied narrative remains open to interpretation. Everett is primarily led by process and materials: the application and accidental nature of paint, oil, graphite, and charcoal. Outcomes evolve and are often not as expected as she tries to allow the work to direct itself.



### Milan Andov

Born in Skopje, Macedonia Andov graduated from the faculty of fine arts. Showing extraordinary talent in drawing and painting.

Andov has won many awards for his art and is exhibiting widely in both solo and group exhibitions internationally. He explores themes relating to the subconscious and unconscious extremities of love, rage and hate, and presents characters in a particular way while articulating the psychological facial expressions, which transform from realistic to idealistic with accented distortions, displaying their deep psychological state.

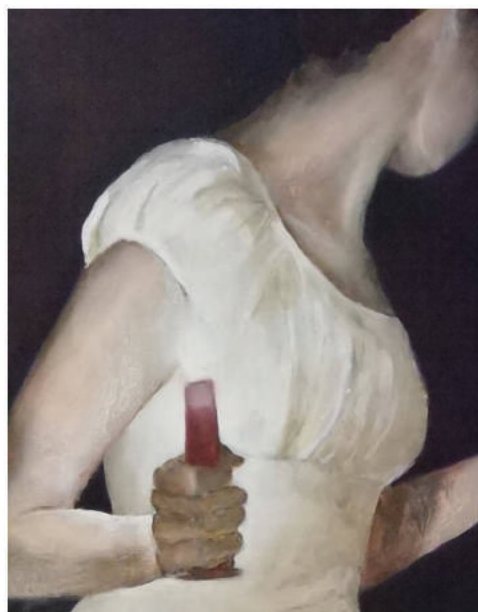
This is strong and impactful art that hits your senses. Art where you feel the soul, heart and mindful interpretations of emotion and sensuality leap from the canvas and draw you in to the depths of the composition.

# INQUISITIVE ART

### Heather Burwell

Burwell's work is from a personal level of perception and experience. It is about human relationships, questioning the humanness of existence within the familial and social structure.

Her aim is to capture a moment, a memory, an exploration of an untold story or imagined image of what was once present, asking the viewer to emotively question their own human existence and habitation of space.





### Victoria Wolny

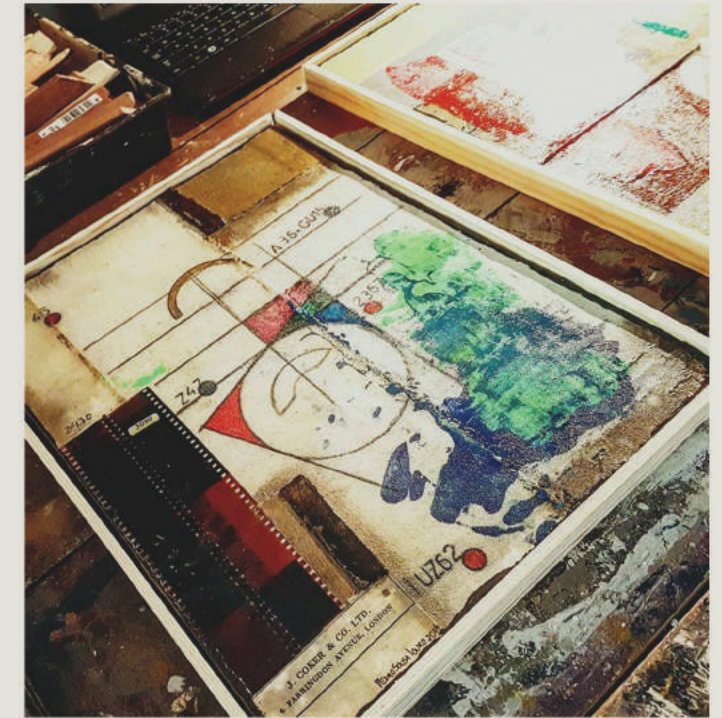
Whilst studying science at Warwick University, Victoria Wolny became increasingly interested in the use of colour; not only as a medium in which to paint but also to directly stimulate or influence the viewer. Over the years, she has developed her own technique and style involving the manipulation of oil paint. The result is a dramatic collision of both colour and texture, giving her paintings a changeable character in natural and artificial lights. The various angles created in the paintings allow the oil to reflect light and subsequently, as the light changes, so does the painting. The natural light of the morning or artificial light of the evening alters the mood of the piece giving it a personal quality.



### Paul Briginshaw

Briginshaw's work thus far consists mainly of portraiture and figurative paintings and drawings, with a surrealist edge. Often, the figures evolve from an image of himself, and thus can be deeply personal in tone. They invite the viewer to consider issues of selfconsciousness, introspection, sexuality and uncertainty. His characters often relate a sense of something having been lost, eroded by time or experience, leaving an expression which is still and pensive. Furthermore, where.

Briginshaw's paintings focus on couples, their dialogue has a strong symbolism for him, a portrayal of various kinds of conflict. In the case of Lighthouse (2015, acrylic on canvas), the two male characters display unease yet union. Their faces are similar; they could be interpreted as two manifestations of the same character. The tallest-necked character represents a protector, casting light in the darkest of times; his hand rests gently on his companion's shoulder, yet he clenches aggressively with the other. This painting for Briginshaw, amongst other layers of narrative, represents our inner struggle to protect ourselves from emotional harm, against the self-doubting darkness always around the corner, to which we sometimes fall prey.



### Pedro Sousa Louro

Sousa Louro has had numerous careers including presenting and modelling but has always lived with cubist images. Now a full-time artist Sousa Louro transfers his soul to canvas. His work is his way of portraying feelings, emotions and perceptions both consciously and unconsciously. For Sousa Louro art is as natural and needed as food or water, he has studied and continues to study art and art techniques, constantly developing his style. His art shows such intensity, a passion and a statement that draws you in and captivates you. Expressions that have been broken up and reassembled in an abstract form.

Sousa Louro is an artist that is able to experiment with techniques and style without losing his unique stamp. We love his work, work that makes you linger, makes you think, draws you in to the beautiful colours and composition. The golds punctuated by shape, the intriguing narratives and the obvious need to express his whole being through his artwork. Sousa Louro's reminiscence comes from the neoplasticism of Mondrian and Ben Nickolson, and in some way Picasso. Considering that, he does not stress about the subject matter, but the geometry for geometry's sake is the key in his pieces..

# NARRATIVES IN ART

### Joss Rossiter

Rossiter turned to art at the age of 58 and has not looked back since. She is now selling her work internationally bringing her vibrant, bold art to a wide audience. Joss creates mixed media art utilizing different textures and techniques using pastels, acrylics, gouache, inks, food colouring and scratching. Joss produces art that is heavily influenced by her life in South Africa, she is determined in her belief that there is joy and an intensity of love and passion even in difficult economic situations. The need to persevere and enjoy life is so evident within her work, colourful art with distortion and fragmented beauty that is impactful and beautiful.

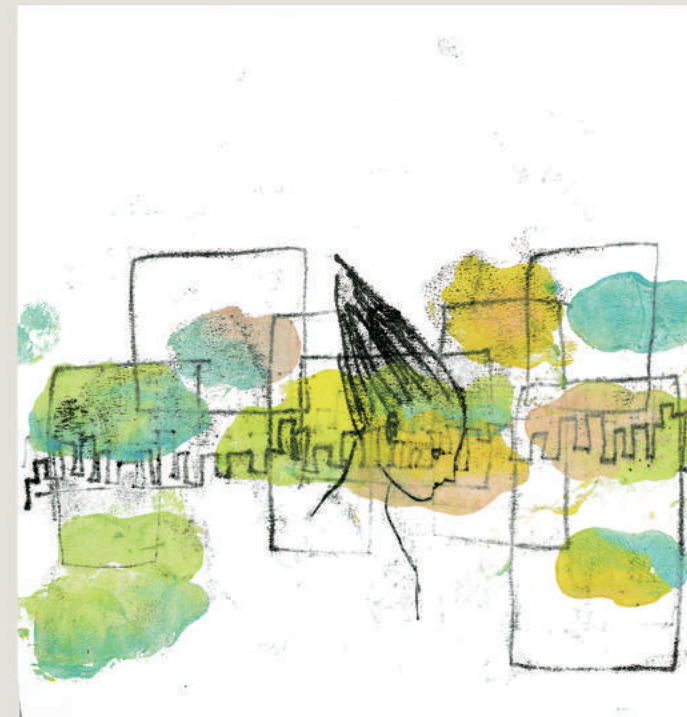




### Helena Carrizosa

Carrizosa is a Colombian/Italian fashion designer. She studied fashion in Bogotá, Paris and London, where she resides now. She started her fashion label with the idea to promote individuality. She creates limited edition collections of timeless and multifunctional pieces.

In 2013 she also established with 4 other London artists a collective called, "ARTISTS WHO ...". In this project she wanted to develop her love for conceptual fashion and make it into art.



### Yuri Tayama

Tayama was born in Iwate, northern eastern part of Japan where it is rich in nature. Her imagination and observation skills were enriched by the beautifully changing seasons. Tayama originally graduated from a medical university and worked as a dental hygienist in Japan. However, she was motivated to draw illustrations and be more creative when she was communicating with patients, especially children at pediatric dentistry.

She loves looking at smiles on their face when people are pleased with her works. Yuri studied graphic communication at Central Saint Martins in 2013- 2014 and has been on Illustration course at Camberwell College of Art since 2014. Tayama creates illustrations and animations, picture books of her own humorous world. She develops her ideas playfully so viewers can enjoy looking at her works and imagine what's going on. She lately had her first exhibition 'Trials & Trails' with two other artists at LAGU cafe in Clapham junction, London.



### Peter Hanmer

Hanmer makes sculptural works out of animal bones large and small. Within the work he explores a range of themes from the philosophical (belief) to political (Ideology) and environmental (extinction). Taking inspiration from real world events, such as climate change and the banking crisis and then putting those themes into a separate fantastical, satirical world where the normal rules don't apply and everything is ramped up to an extreme.

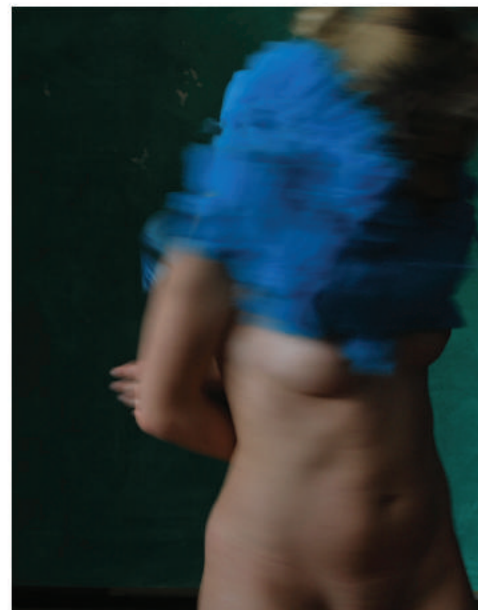
By primarily using animal bones, to make characters and structures only adds to the poignancy of some of the themes explored. The work is meant to be subversive as well as provoking a reaction from the viewer, characters are purposely doing very human things, sometimes interacting with human props and even the viewer themselves. Through the many layering of themes and narrative driven events taking place in these separate worlds Hanmer is keen to reflect, often humorously, on the events in our own world locally and internationally.

# TIMELESS BEAUTY

### Ilaria Facci

Facci is an exceptional artist who creates beautiful, bold and unique work that challenges the viewer and leaves a lasting impression.

Facci was born with a net blastoma that resulted in losing the sight of her left eye. This caused a distorted and incomplete view of what surrounded her. This diversity caused her pain and inadequacy but led her to ask questions about herself, about her own identity as an artist and a person. The answers came through a camera! Her self-portraits depict the female body. Focusing on pain and coming to terms with her own body and inner self as a gay woman in a modern world.





### Nicola Keelan

Keelan is a self-taught artist. Having set up a studio she has been happily honing a style that aims to recreate depth and detail, to share with the viewer a glimpse of a scene that brought inspiration. Nicola has exhibited widely in fairs and exhibitions in her home town of London, but has also sold pieces as far afield as America and New Zealand. Influenced by an eclectic taste in fine, realist and representational art and inspired by both the urban and natural landscape, she uses oil paints to build subtle layers of texture and detail. Her ultimate aim is to present to the viewer a scene that they would want to explore; to see what might lie beyond the horizon, at the end of the path or around the bend in the road.

# AESTHETICS IN ART

### Ronnie Jiang

Jiang's work is both figurative, illustrative, a bit decorative and thought provoking. Jiang likes to create work that is dramatic or ironic, something that invites people to think. Her style has evolved from graphic to figurative, and is interested in all sort of patterns and motifs. Her experiences as a designer has influenced her a lot for the patterns. It's an approach to reality or rather Jiang's reality. As a writer uses words to express themselves, as a painter Jiang uses images of her world to express herself.

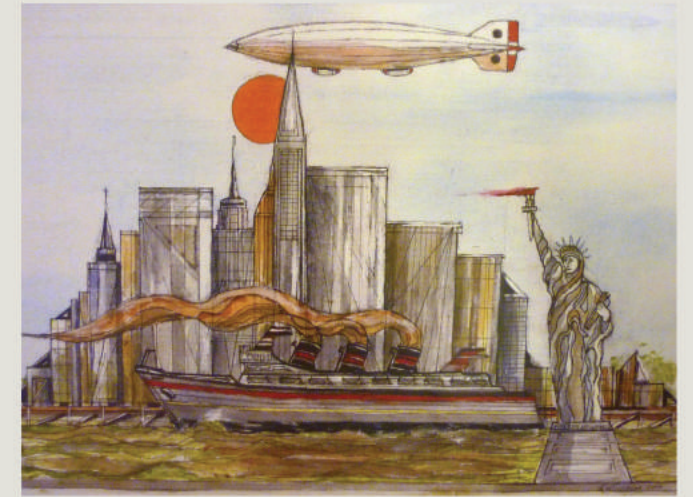


### Roy Milburn

Roy Milburn was born in the East End of London in 1934. Roy started painting as a young boy where at school his artist talent was recognised and he was awarded with a scholarship to study at Camberwell College of Arts, London from 1949 to 1951. Living in the East End he took inspiration from the surrounding area.

After completing his college course Milburn went on to work in the commercial art sector painting insignia for places such as Westminster Abbey and St Paul's. He then served National Service and later married Rene (her portrait can be seen below). Milburn's art is emotive and drawn from his memories both of London and his life experiences.

He has experimented with many different mediums including oil but his preferred method now is watercolour, acrylics and pen on paper. Roy has exhibited at Whitechapel Gallery and The Royal Society of British Artists, and continues to sell his work in both original and print form.





### Isobel Cortese

Cortese is a West Yorkshire based miniature world artist.

Fascinated by the way life in miniature evokes feelings of wonder and enchantment, Cortese likes to create scenes replicating daily life but with a dark twist having a love for the weird and wonderful. Curiosity boxes, dark tales and intriguing collections inside glass vessels greatly influence her work.

Cortese tends to incorporate playful humour into most of my scenes and hopes her work both amuses and fascinates.

# VISUALISATION

### Sal Jones

Jones is a painter who lives and works in London. Her work is generally figurative; utilising photographs, found images and objects as starting points then transforming and/or de-contextualising them to alter interpretation. Much of her recent work has been inspired by images appropriated from film, photography and the media, and exploits the conventions of cinematography; heavy cropping, close-ups, angled shots, saturated colours, as well as the use of dialogue for titles. Jones is interested in developing ideas around fiction and reality and shifting contexts, how we interpret and relate to images as spectators and how they affect us.

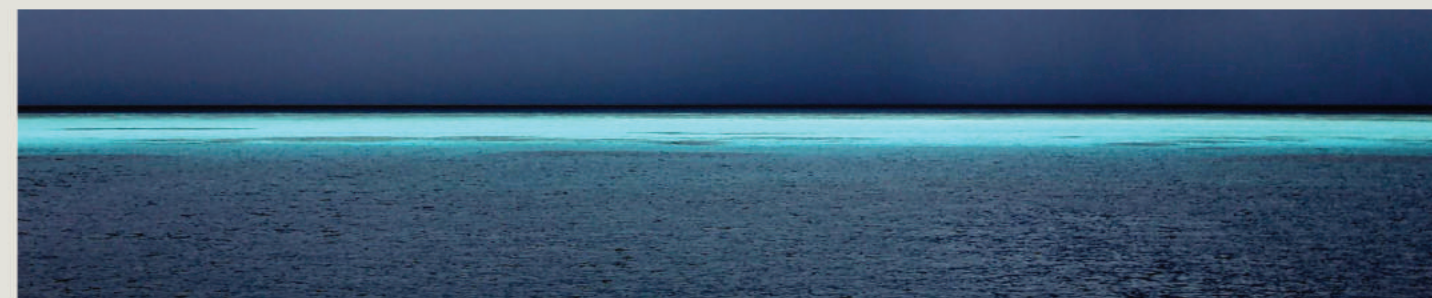


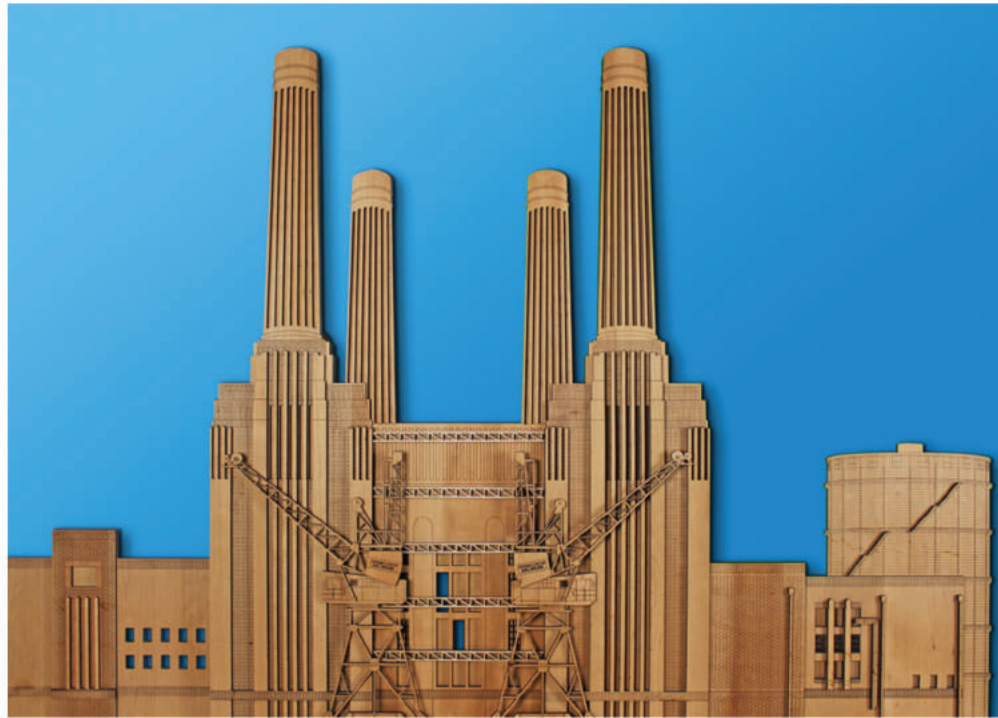
### Marek Emczek Olszewski

Olszewski is a fine art photographer living in London. He uses the medium of photography freely and instinctively, at times beyond its conventional role, form and expectations. Marek constantly experiments: with composition, light, colour, movement, textures, angles, reflections and geometry, both in nature and urban environments. He finds hidden meanings for everyday and otherwise mundane subject matter. His newest work featured in this year's FLUX exhibition can be described as exaggerated minimalism with a unique creativity and power around what is artistically known as negative space.

Marek exhibited in London, Brighton, Brussels, Barcelona, Poland and South France and won several photographic awards. His achievements have been covered in print and online media. He is particularly interested in shadows, silhouettes and reflections as they bounce life straight back at you. His work is simple, cut very neatly. He is very noted for capturing strong and vibrant colours which are present in everyday life. A run of the mill moment when captured by him can show today's most agreed upon philosophy: it is really how you look at something which determines whether or not you see beauty and positivity.

"I use the medium of photography freely and instinctively, at times beyond its conventional role, form and expectations. Constantly experimenting: with textures, surfaces, movement, reflections, light, angles. Discovering new ways of expression, new meanings. Attempting to move imaginations. From sharp, colourful geometric shots to soft and calming landscapes. From minimalist to complex".





### Steve Forde

A commercial artist and designer who lives in South London. He studied fine art and design before going on to specialise as a graphic designer. After an extensive career as a designer in the media industry, including a number of years as a creative director for the BBC, he now divides his time between his art, freelance work as a design consultant, and designing interiors.

"As a designer I am obsessed with detail, technique and quality of finish. In these artworks I have married this obsession with my lifelong passion for architectural form, line and detail. The results are striking, detailed pieces that reinterpret complex architectural forms into warm, wall-friendly art."



### Simon Probyn

Simon Probyn is a sculptor who works using heavy industrial steel. Based in rural Herefordshire he creates abstract and figurative works of art from both found and new material. He takes the man-made architectural steel designs and lets them subtly dictate their new purpose.

Probyn came late to sculpting, having spent 30 years in unrelated employment. Over the last 2 years though, he has been able to focus his full attention on sculpture and he has been successful in creating highly original artwork.

"I revel in being my own boss, working within art and with my own designs and on bespoke projects." Simon



### Michael John Hunter

It is natural that we should lose the childish sense of mystery that comes from encountering something for the very first time. It is understandable that our minds make assumptions about images and the visual environment based on everything we have experienced before in order to make our movement through the world easier. Things that might once have sparked curiosity or amazement inevitably become all too familiar.

Hunter's work aims to reverse this process of overfamiliarity. Through his photographs he tries to restore the eyes we had as a child, eyes of pure wonder and amazement. Hoping to achieve this not only through trompe l'oeil, which can be entertaining and enjoyable for viewers but also through his choice of subject and setting. By placing a lifeless, commonplace and insignificant being into forgotten or abandoned human environments Hunter wants to spark renewed interest in our surroundings and the creatures we share them with. He hopes viewers of his images gain a new appreciation of the intricacy and delicateness of the world, even if just for a moment.

# DETAILED CONCEPT

### Nadia Day

Day studied art at the prestigious Knights Park at Kingston University, training under Leo Duff. Following that she gained a BA in Theatre Arts at Birmingham University; worked in TV Production Design and Experiential Marketing; before revisiting her passion for painting.

Day works in acrylic on canvas, opting for pallet knives and thick brushstrokes to create bold and energetic work. Most of her imagery is of deer in Richmond Park and Bushy Park, her local stomping grounds, plus seascapes from the south coast.





### Satoshi Date

Satoshi Date is a Tokyo born artist. Central Saint Martin's graduate and director of a self-titled art and design label. He started his career in the fashion industry, but soon grew disillusioned with materialism and consumerism of the fashion world. A series of life-changing encounters with people scarred by violence, delinquency and abuse, abandoned and rejected by society made him shift his creative practices

Recently he launched a new music project, Spirit Mill, and designed costumes for a theatre project funded by the Japanese Agency for Cultural Affairs. His works were also exhibited at OffTen Gallery in Tokyo, Japan and The Other Art Fair in the UK.



### The Finsbury Park Deltics

Working in a variety of media, Deltics' parodies mass culture by exaggerating formal aspects inherent in our society. He makes work that sometimes appears idiosyncratic and quirky; at other times a by-product of Western hyper-consumption; yet more, humorously indecent. Deltics' artwork is given improper functions; implications are contrary, form and content merge. Shapes are dissociated from their original meaning and the system in which they normally function is thereby exposed. Initially unambiguous meanings are shattered and disseminated endlessly.

By putting the viewer on the wrong track, he gently prods various overlapping themes and strategies, with several recurring ideas (class, provocation, violence, family and - oh what a surprise - sexual desire) eventually being throttled. Being confronted as aesthetically resilient and thematically interrelated for memory and projection, his work seems true and, as we all know, the truth exists but it has many faces. Energy (heat, light, water), space and landscape are examined in less obvious ways and sometimes developed absurdly. In a search for new methods to read the city, he focuses on the idea of public space and more specifically on spaces where anyone can do anything at any given moment.



### Jay Harrison

In 2015 Jay Harrison graduated from Staffordshire University with a First Class Honours degree in Creative Music Technology BSc. Harrison is passionate about developing new sonic art installations, musical instruments and audio tools working with both hardware and software mediums. He believes that musical instruments and sonic art should never limit creative freedom and as such strives to produce work that ensures artists are only ever limited by their own creative vision.

"Electromechanical Lithophone" is an interactive installation that explores the re-appropriation of a traditional musical instrument into a unique and subversive spatial paradigm.

The audience is invited to step inside an enclosure of 24 tone bars crafted from North Welsh Green Slate; the bars are arranged in a large circle and mounted on modules that enable autonomous musical performance. Participants can select a piece of pre-programmed music to experience from within the installation and are also encouraged to play the Lithophone in real time using an electronic keyboard.

# SHAPING SPACE

### Sabina Pieper

Sabina Pieper was born in 1970 in North West Germany. She moved to London in 1993 and studied at Camberwell College of Art, UCL, London.

Her work uses an array of techniques, collage, painting and drawing. She provides texture, layers and complexity to the surface of each composition combining media images with both botanical and other intricate pencil drawings.

The complex, multi layered work reflects contemporary transcultural identity, referencing Tudor paintings, Fashion and day to day realism.







### Sara Abbott

Abbott is a painter of collections. Fleeting and varied inspiration has resulted in 'albums' of work: landscapes, nudes, flowers. As soon as one subject is begun the next is calling, always varied. After a lengthy practice of portraiture, her draftsman's skills are exemplary. Now, as a result of a change to her natural eyesight, the formal, almost photo-real quality of her work is beginning to relax. Paint is allowed to be paint, oil is mixed up with spray, line and form are reducing to the essentials. These smaller works on show at FLUX are some of her very recent works. Abbott's main studio is in the Pennine town of Todmorden but she has a small studio built into the back of her van.



### Viv Owen

Viv Owen was born in Bury, Lancashire in 1970. After leaving school at 16 to work as a Graphic Designer, she returned to study at Stockport College, Cheshire 1992-93, earning her BA at Bradford College, Yorkshire 1993-96 and her MA at Leeds Metropolitan University, Yorkshire 1998 – 2000

Owen's oil paintings reveal a fascination with emotional states. Investigations into elusive expressions form with the help of unwitting accomplices captured from the TV screen. Forever given pause, Viv translates them into realistic yet gestural oil paintings. Domestic in scale (though far from cosy!) they make intriguing comment on artificial emotional entanglement as a substitute – or perhaps immunisation – against the fluctuating feelings of everyday life.

Owen has had many solo shows in Yorkshire over the past decade, most recently at Cupola Gallery, Sheffield and regularly opens her studio as part of the bi-monthly Artwalk Wakefield

Since graduating, her work has been included in group shows throughout Yorkshire, London, Barcelona and New York



### Vincent Kamp

Although not having studied at a formal art school, Vincent Kamp has intensively studied both the old masters and contemporary artists through his huge collection of art books and many hours in the National gallery and portrait gallery in London sketching. These sketches are then the basis of studies in oil and charcoal. He has also studied sculpture, working in clay and cold casting in iron. One of his most recent works was acquired by Francesco Moser's cycling museum at the Moser Vineyard in Trento, Italy.

In 2015 he collaborated with award winning photographer Geoff Waugh to create the Beyond The Peloton exhibition in London which celebrated the heroes of British Cycling.

In between painting and sculpture Vincent successfully published a comic book for his two boys Leo and Ben. Robotlayer was also developed into an interactive iPad app and is in discussion to potentially be turned into an animated series.

# INTERNAL THOUGHTS

### Tomas Harker

Tomas Harker (b.1990) is an emerging artist featured in collections worldwide and garnering increasing international interest.

He has previously been included in an exhibition at the Tate Modern, London and has recently had two hugely successful solo shows. Tomas Harker has a growing exhibition schedule, including taking part in a group show in London in 2015 alongside a host of highly respected artist such as Damien Hirst, Marc Quinn, and Cecily Brown. He has received recognition from esteemed critic Brian Sewell and gained glowing appraisals from many publications such as Vogue Magazine.



# Sam Shendi

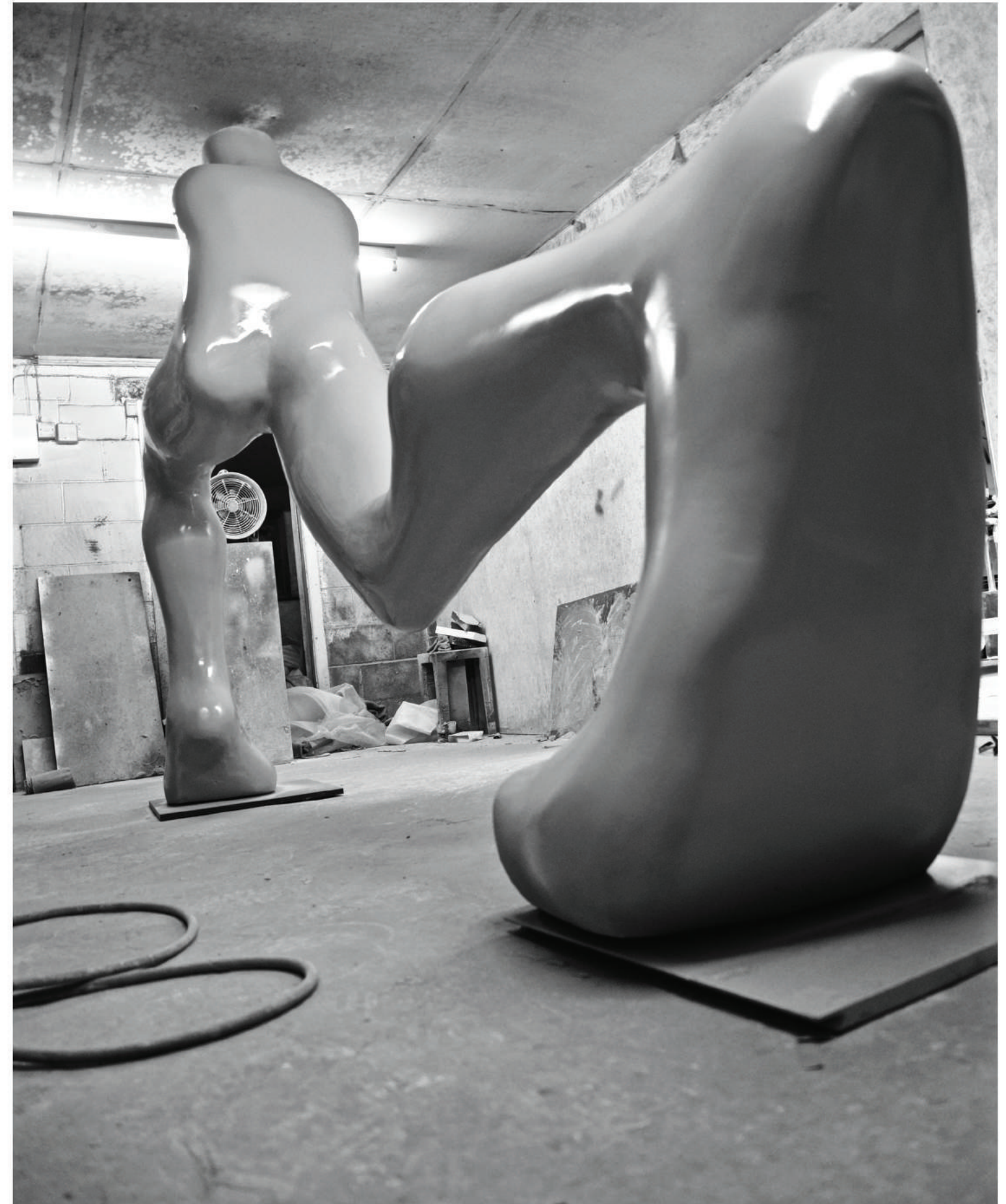
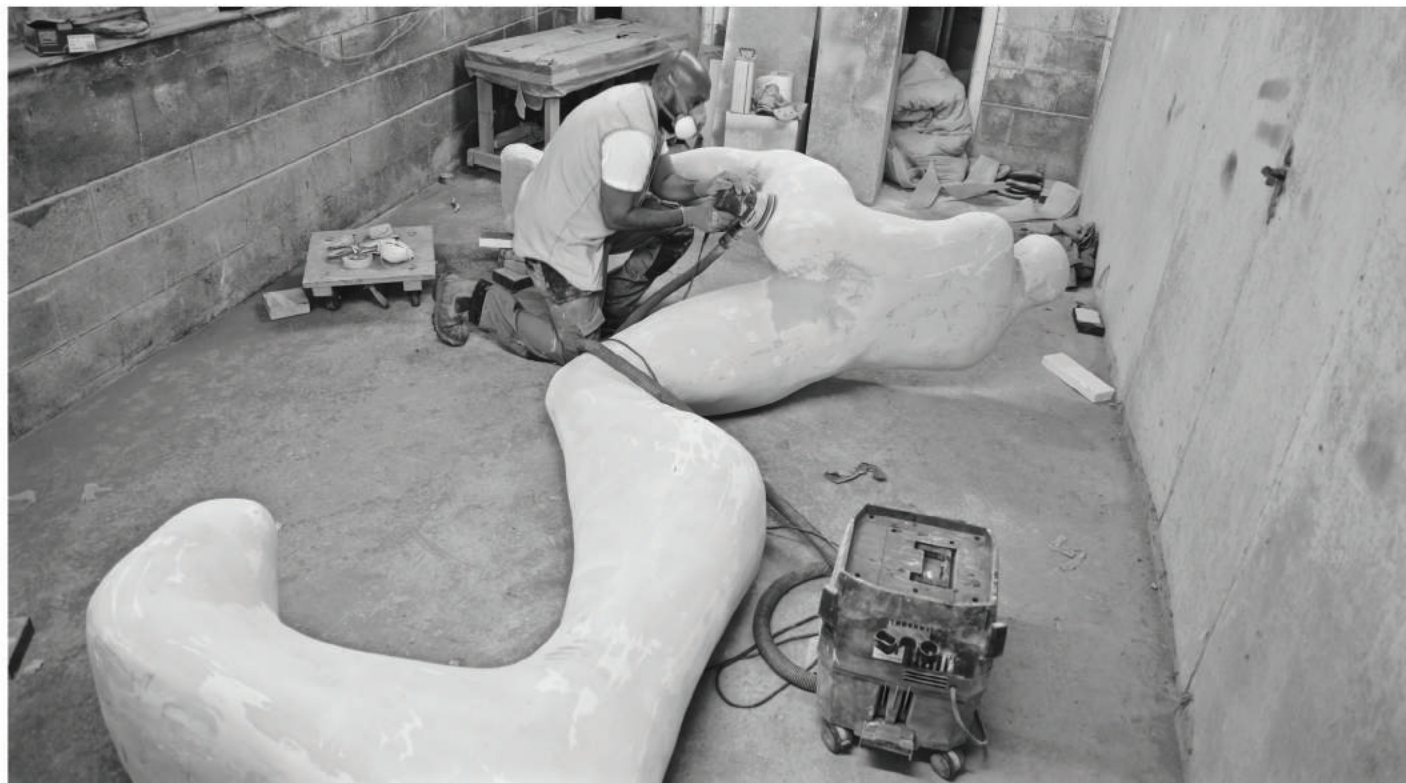
## Sam Shendi - Revealing 'The Big Step' at FLUX

We are delighted to be showing the 'Big Step' part of The Giant Collection by internationally acclaimed artist Sam Shendi ahead of his Solo show Mother and Child at The Civic in Barnsley Dec 2nd - 28th Jan. Read about his inspiration for 'The Giant' collection below.

The majority of my work focuses on the human figure and the emotional impact on the body through the form and movement. As my practice has developed my sculptures have changed shape and the colours have altered depending on what I am trying to represent within the art work. My work is minimalistic and yet harps back to classical sculpture therefore creating a unique marriage of contemporary work with a classical feel. In this collection, I have simplified the human body in a different way from previous collections. This time, in way that the viewer can still recognise the human form. The collection consists of three different sculptures each one displaying a unique experience. Over the years I realise the majority, if not all of us, go through these experiences.

Entitled, "The giant" collection, not by the size of the sculpture but by the immense experiences human beings go through. These moments could change us and impact on our life hugely and effect who we are for the rest of our life. The size of them impacts the statement, so that if you see them you have to stop and view them. Hopefully, the viewer makes a connection between themselves and the artwork. The colours describe memories. The birds represent the voices within our self. The figure is me, it is you, it's all of us. My intention is always that my sculptures connect with the contemporary society and speaks about experiences that long before us, people felt and in years to come people will continue to feel. It is those shared experiences that inspire my work.

These three sculptures are like one story. A story that has a beginning, a middle and an end. Emotion is what drives us and it has a great impact on our body. As a sculptor I try to capture these movements and freeze it into a moment in time. Creating a sculpture or a vessel that contains these emotions, presented in way that can have an impact on the space and most importantly the viewer'.





### Marion Jones

In Jones's recent paintings the geometric forms relate to the edges and to the crossbars of the canvas that have opened out. The triangles and squares have some affinity to the nets of solids but on a flat plane.

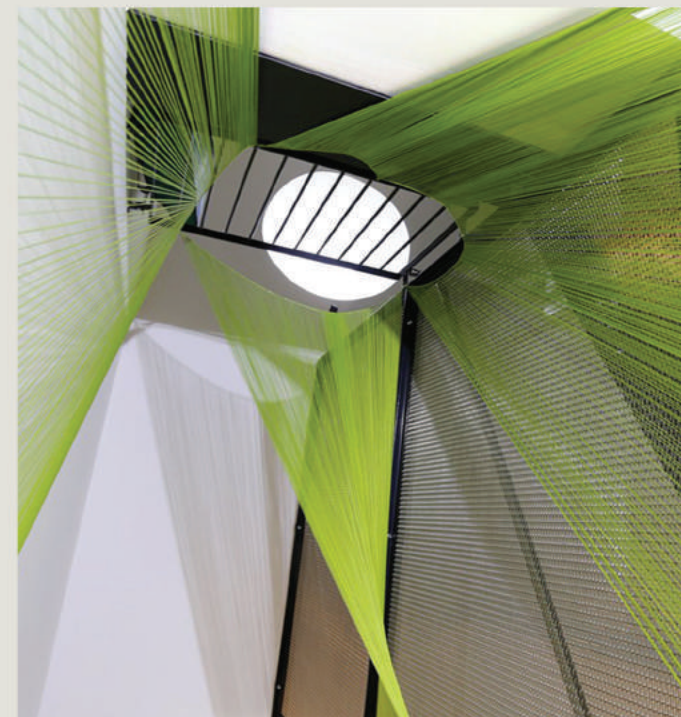
Textures and colours form edges and planes and pastel, oil, graphite and acrylic, all work against each other and bleed into each other. There is a play between transparent and opaque layers, solid and floating forms, matt and shiny surfaces and bright colours. This becomes more apparent as the viewer shifts their gaze, some forms are visible and some disappear. Light is a very important factor.

# TEXTURE AND LIGHT

### Sue Skitt

Taking inspiration from Dutch and Spanish vanitas paintings from the 16th and 17th century, Skitt's mixed media photography incorporates artifacts within the traditional construct of the still life. This combining the present and past speaks to memory and personal legacy both the decomposition of the natural (such as rotting fruit and withering flowers) and the breakdown of man made objects referencing the physical body and mortality.

Skitt graduated from the University of Huddersfield with a (BA(Hons)Fine Art for Design in 2012



### Sally Buchanan

Buchanan studied Fine Art at Central St Martins. Her interests include Jungian thought, the 'Psychology of Awareness', Astrophysics and Cosmology, The Environment and Art as Medicine. She combines conceptual principles with meticulous craft and a dash of wit to make installations, sculptures, embroideries and land art. In recent years she has enjoyed developing techniques for making large-scale site specific installations using thread to respond to the unique atmosphere of individual spaces. The threads play with contemporary theories of astrophysics and trace out the pathways of intuitive energy forms sometimes following apparently inexplicable random routes and at others obeying the pleasing rules of geometry and harmony. The complex patterns created can respond directly to the limits of our perception and at other moments, as if by illusion, may pass straight through it. The works make an elegant challenge to our visually solid world and weave into the edges of our consciousness hinting at alternate realms and other dimensions. Buchanan is a member of The Free Painters and Sculptors. In 2013 she was awarded the first Roy Rasmussen Prize and in 2015 her installation 'The White Hole' at the Fortezza Vecchia in Livorno, Italy was shortlisted for The Premio Combat Prize.



### Sarah Shaw

Shaw's work hovers in a place between figuration/non-figuration which allows the viewer the space to impose their own interpretation. It comes from a very quiet place, almost a place of meditation, where metaphorical or symbolic images/barriers/passages are explored in the painterly dialogue to speak of some of the conditions of being human and also of the concept of living through time.

Shaw's paintings sneak right up to the classical formulas of beauty and composition, and then quickly back away again leaving the viewer wanting. She dangles completion in front of the onlooker like an unreachable carrot. While this palpable manipulation is at times uncomfortable, its reflection in contemporary life is equally so. The works evokes the emotions of incompleteness and wanting that can riddle this over-promised and unfulfilled 3rd millennium reality.

Sarah graduated from Falmouth College of Art in 2001; her work has been purchased by private collectors in the UK and abroad, and resides in many private collections, including Rolling Stone, Ronnie Wood. She works from her studio in Brighton.



### Sue Munson

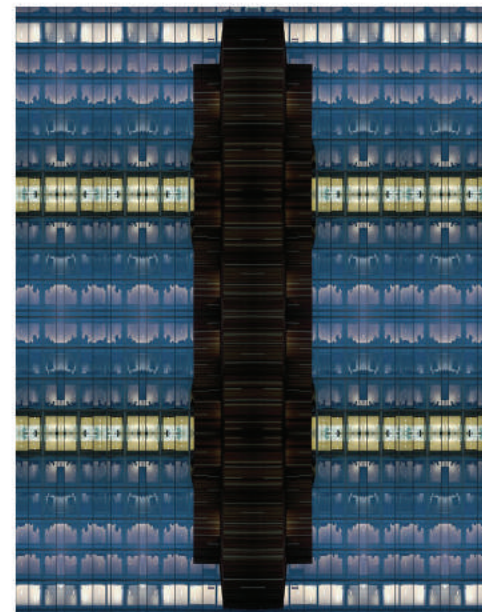
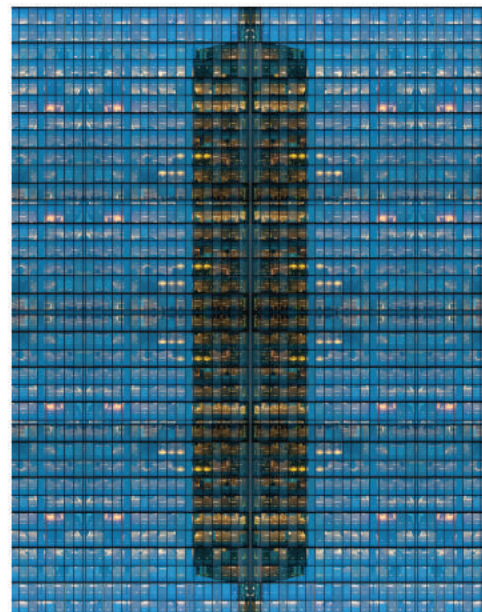
Munson is an artist whose work shows an experimental and emotional response to the world. She shows the dynamics between a serene contemplative approach based on flight, sanctuary, and freedom juxtaposed against work based on social observation and the virtual world which is seen as frenetic and urgent. All of Sue's work is underpinned and unified by layering a combination of text, colour, and mark making giving an illusion of depth. Although the thought process of her chosen subject matter can be quite complex she likes to portray a sense of simplicity and sometimes a little humour. Past work has been shown in solo exhibitions and group exhibitions. Her work has been exhibited in the prestigious RA Summer Exhibition.

# SHAPE AND FORM

### Noah Da Costa

Costa's interest in art photography can sometimes blur the line between his commercial work. Architecture being an example of this where his interest in the architect Denys Lasdun (who designed the National Theatre in London and the core buildings at University of East Anglia) lead him to produce several series of work based around architecture.

Costa recently collaborated with Art Below at KingsCross Tube station and Regents Park Tube Station. He has held solo exhibitions at Norwich University and Hospital Club



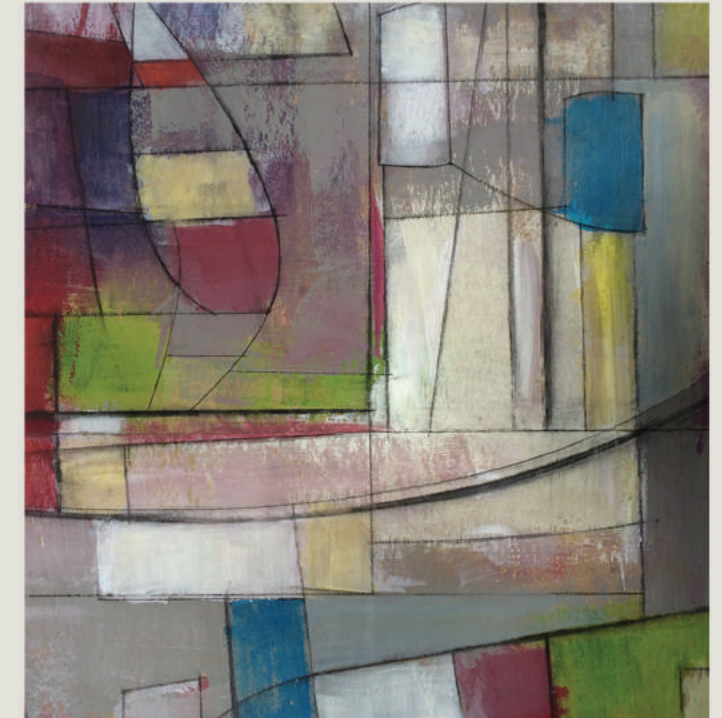
### Humphrey - Lahti Art (Marko)

Marko learnt his initial stone carving skills on the Mediterranean island of Gozo and went on to study sculpting techniques at the University of Hertfordshire.

He exhibits his sculptures with galleries and in group shows both in the UK and Internationally. He has exhibited with the Royal Society of British Artists and the National Society in London on many occasions. He has also exhibited in Gibraltar, Guernsey, Hamburg and New York.

Marko was elected an Associate of the National Society in 2003 and made an honorary member of the Fine Art Association, Gibraltar in 2006.

In 2008 his sculptures were shortlisted for the Royal Academy exhibition and he was elected a Member of the Royal British Society of Sculptors in 2009. In 2014 his bronze 'Eype Figure' sculpture was preselected for the Threadneedle Art Prize and in 2015 his Hugging Couple sculptures won major accolades in the USA from Saatchi Art in Los Angeles. In 2016 Marko was awarded the Brian Mercer stone carving Residency in Pietrasanta, Italy which commences in 2017.



### Humphrey - Lahti Art (Eva)

Eva's art moves pleasingly between figurative and abstract in a distinct and enticing style, naturally creating a diverse and versatile body of works, from monochromatic to colourful, figurative to simplified abstraction, including drawings, paintings, prints, bas-reliefs and sculpture. Through observation of the graphic visual effects of structure and rhythms in both the natural and the manmade worlds, Eva extracts the power, energy and essence of things, while working on current pieces of object-based work. The interdisciplinary approach to her work and parallel career experience in diverse areas of life enrich the quality and depth of Eva's work, enabling her to build a continuum of coherent esthetic nexus.

Eva studied Interior Architecture and Furniture Design at the University of Industrial Arts in Helsinki. She received her MA in Architecture and Design from the Royal College of Art, London. Eva has exhibited at Cork Street, London and across the UK. Two of her recent paintings were preselected for the Columbia Threadneedle Prize 2015 and others for NEAC 2016. Eva has received private commissions for her work and her pieces are finding their way into private collections around the UK and can be also found in Belgium, Finland, Spain and Sweden.



### Tania Beaumont

Tania Beaumont is a mixed media artist in the broadest sense, using diverse media to create paintings and original prints, sometimes combining the two with handwritten and mono-printed papers. She often paints on, or incorporates, original old documents which can add to the theme. Recently she has been producing 'monotype papercuts' – cut and layered one-off prints which form paper reliefs.

Having lived the majority of the past 30 years as an expatriate, she has an extensive visual database of memories and images which she can access, to produce works with narrative and ambiguity.



### Sandra Menant

Menant is a full-time professional artist, based at her own studio in South-West London, creating vibrant art which explodes with colour and energy. Natural flora and landscapes, especially in tropical regions of the world, spark her imagination and extraordinary creativity. Her original and unique approach produces textured, spontaneous canvases ranging from abstract impressionistic paintings to semi figurative work. With her use of sparkling colours and contrasting textures, Menant conveys strong emotions ranging from dynamic to serene. Much of her work is inspired by many years travelling in South America, and studying the culture of this fascinating continent.

Menant has recently worked on a series on Cuba, sparked by the beauty of this island and the struggle of its people. Her current focus is a Volcanic Series, reflecting her passionate nature and fascination with the dynamics of natural environments. After travelling extensively in developing countries and seeing first hand the struggles many people face in day-to-day life, Sandra decided to actively raise money for Wateraid UK. This is a long-term commitment: she donates 20% of the proceeds of her sales to this crucially important charity for life-saving projects in Madagascar.



### Noëll

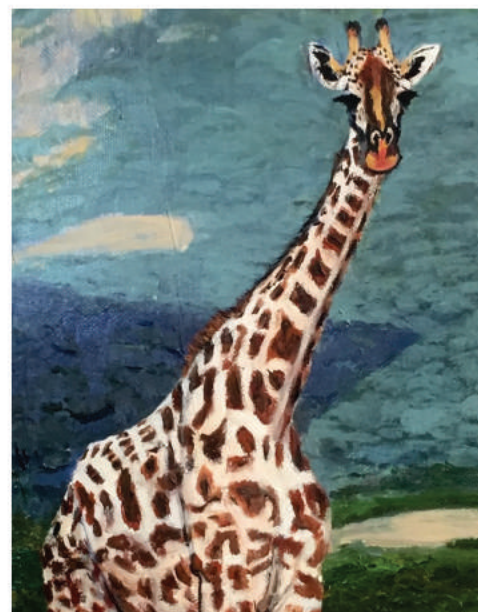
In 1975, in the Würzburg's Falkenhaus, the young Jewish girl, who had been expelled from public school under Nazism, formulates her style under the Franco-German reconciliation, initiated some years earlier by De Gaulle and Adenauer. Already, we see the beginnings of a revolution at the heart of Noëll's pictorial language. A way of working the backgrounds deep in the root of the movement, drawing from it a sculpturally erosive force. In a few paintings, the human form will be drowned in the depths of the world of formation of beings and things. And that is what Noëll is looking for. An unfathomable law, which dates back to the beginning of existence, unified by its elements. Noëll expresses the transcendental unity through a formalist progression in each media: Figures, Crumples & Creases, Tears & Rips, Concretions, Prints, Fragments or Abrasions. Somehow these techniques brings Noëll closer to the Nouveaux Réalistes who she exhibited with, in 1959, at the first biennial of Paris. Noëll manages to discover the unstable epicenter of all these media to have been confronted repeatedly with the destructive forces of a world left to itself during two wars, a world war & a decolonial war. These tragic events will accentuate a lasting influence in the noëllien subconscious.

# CREATIVE SOULS

### Marcela Olivia Dorantes

Marcela Olivia Dorantes examines the interactions of wildlife, domestic animals and humans to express the experience of expansiveness, intimacy, domesticity and remoteness through her keen sense of space, shape, color and form. Birds, bears, dogs, and felines represent unfettered spiritual creatures symbolizing the transcendence of prosaic life.

Using the versatility of color in her art is her exclamation of gratitude to the world and synergy of life.





### Tatawa

Tatawa's art is an urgent release through spontaneous gesture. With fragmented marks, wandering lines and graffiti-like stains, she seeks to capture the most immediate impulse. Her commitment to authenticity results in an inconsistency in style. Like journal entries, the experiences of the day are purged onto the canvas, often with a period of mindless doodling before the painting settles down into a satisfying shape and form. Her belief is that the nature of habit is sufficient as a source of structure. Tatawa's work celebrates the inherent validity in any given expression. Her desire is to create an idealized space where erratic uncertainties swim in a womb of eternal perfection.



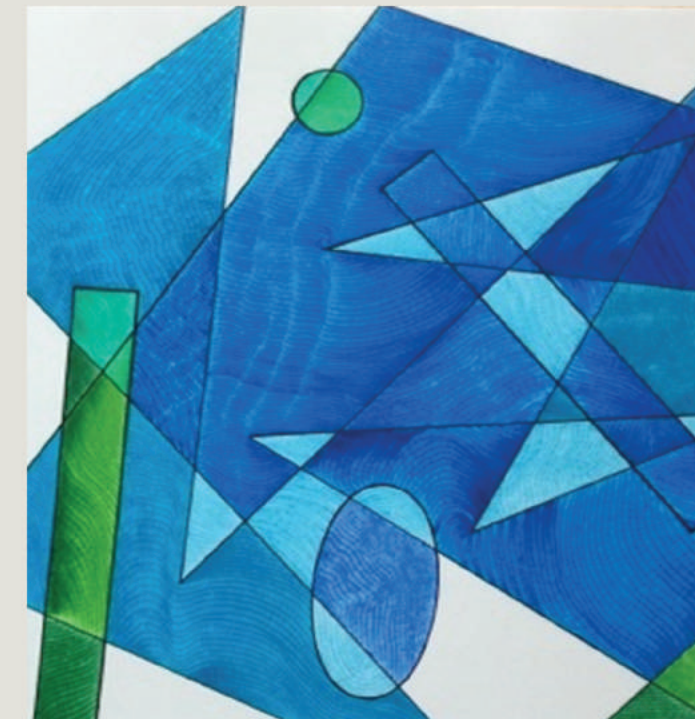
### Michael Wallner

Wallner has spent more than twenty years in the media industry working on entertainment programmes, talk shows, documentaries, animations and a children's novel.

But creating original and innovative art is his true passion. In recent years he has moved into more ambitious work – digitally manipulating his own photographs to produce unusual works of art and installations on a variety of surfaces.

He now works out of Wimbledon Art Studios in South London as a full time artist and is represented by Degree Art, Will's Art Warehouse and Box Galleries.

His latest work celebrates the beauty of the city through the shapes and outlines that define its character. The collection features pieces using brushed aluminium, reclaimed wood, laser-cut acrylic, plaster and brass paint and a 1930's copper-lite window, as well as neon, magnetic, and L.E.D installations. Recent exhibitions include The Affordable Art Fair (Hampstead, Singapore, Battersea), The Other Art Fair, Will's Art Warehouse, Degree Art, Box Galleries, the House Fair, and The Open Studios Show at Wimbledon Art Studios. This year he will be exhibiting in London, Singapore and New York



### Stuart King

Born in southern England, King considers himself British, European and a citizen of the world. As an angelic choirboy, he quickly developed a love of theatre, cinema, music and the arts. After an education in Business Studies, he spent 10 years working in hoteliership – culminating at the Four Seasons on Park Lane. During this period he began painting in oils with his first London exhibition coming in summer 1996.

Transitioning to a life in the theatre, King performed for several years in the West End and National Tours, most notably productions of "Camelot", "Evita", "The Sound of Music", "The Pirates of Penzance" and "Seven Brides for Seven Brothers".

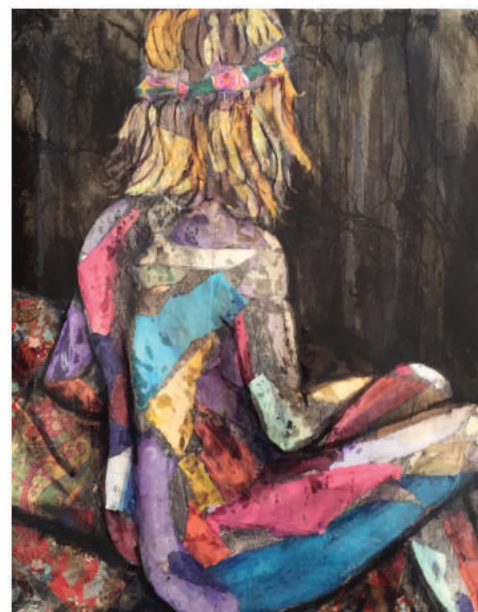
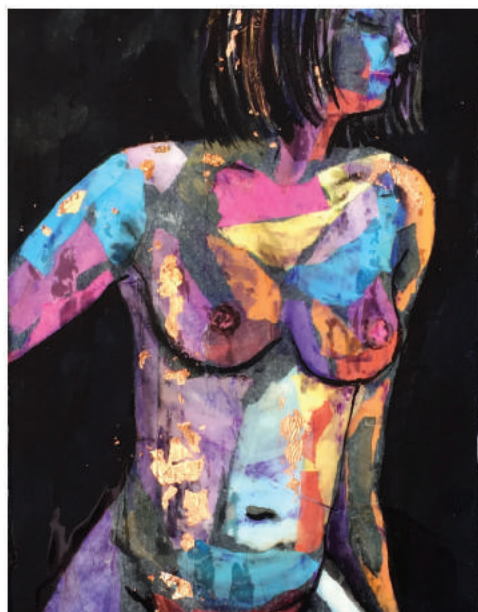
The need for greater emphasis this year on work/life balance, has resulted in the development of a watercolour technique which emulates natural wood grain and mineral fracturing. Colours and contiguities reflect King's passionate assertion that we work better when we embrace our differences, acknowledge how they complement and enhance one another and create a more beautiful whole.

# BOLD EXPRESSION

### Nicky Chubb

Nicky Chubb originally trained as a designer (Central St Martins BA Fashion 1993) but has been working as an artist for the last 10 years. Her collaged nudes explore the play of light across skin and are heavily influenced by her love of textiles.

All Chubb's figurative work is mixed media, either quick, gestural drawings or multi-layered collages when time allows. Each piece is created directly from the model in one sitting.





### Sima Mehta

Mehta feels complete in giving individuals a story and a means of expressing emotion using the canvas as a voice. Inspired by Pollock and Jean-Paul Riopelle; Mehta offers a bold and contemporary take on Abstract Expressionism. Mehta works with acrylics and mixed media using vibrant thick strokes coupled with spontaneous splashes of paint to create a bold spread of colours and layered textures, she injects her passion into her work, creating pieces that evoke a sense of ambiguity and mystery, appealing to her audience's imagination and interpretation. Her paintings capture the essence of her experiences from different parts of the world visiting culturally diverse areas, by which she is constantly intrigued and inspired by.



### Tashi Khan

Khan was born into a family where art and culture were important and had been important for generations. Khan imbibed an early appreciation of the arts from her immediate environment from as far back as she can remember.

Poets and artists came and stayed for long periods doing family portraits and art. She remembers watching spellbound as they worked with brushes, knives and pallets. Her parents recognised her interest and inclination and encouraged her to paint. She has not looked back.

Khan's work is a dialogue in contemporary times, a narrative that resonates a sense of precariousness that has come to signify our times. If anything, it challenges the sense of the immovable, the permanent. It embraces vulnerability and fragility.

The focus shifts from the changes that are observable and felt to those that are often unacknowledged and immutable, a sense that the beliefs and certainties that define our world have changed irrevocably.



### Justin Carroll

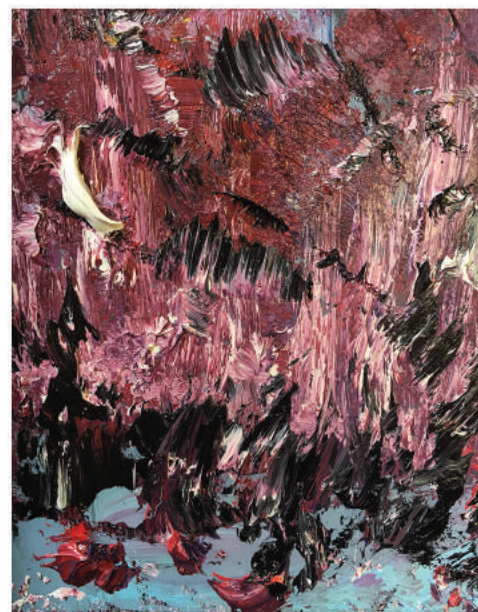
Carroll is a mixed media artist based in Cardiff, Wales. The work, which is selected for you, comes from a desire to present Justin's greatest passion. "Outsider art has always intrigued me; the works of self-taught artists whose forms of creative expression exist outside accepted cultural norms and are intuitive rather than learnt. Working freely and sporadically from images collected from many sources, including: magazines, old books, sketches and any memories that linger or arise during the process of making each piece. My work signifies a need to make order from this mass imagery, whether stored in sketch book or within my memory by creating large scale, multi-media paintings."

Carroll has been a practicing artist for over twenty years but has rarely exhibited having sold privately throughout the world. His melancholic artwork careers from painting and drawing to printmaking and sculpture in a plethora of new materials. Carroll's work uses dark representations of love and raw passion, Shakespearean tragedy style adaptations, with a modern twist although any romance is tempered by an awareness of the corrosive effects of consumerism and mischievous humour. All employed in exposing a subtle complexity surrounding the human condition.

# THE PASSION OF ART

### Terry Palamara

Terry Palamara is a London-based artist who grew up between Egypt and the South of Italy. Born to a musician and painter, she has been surrounded by the sound of blues and the smell of white spirit all her life. After dedicating several years to photography, Terry has, in the past two years, discovered a fresh release of passion in painting. Her works space from portraits in oil colours to abstract landscapes in acrylic and wet paint. The series that will be exhibited at FLUX is a collection of "Epiphanies". Mixed media abstract paintings that reflect the up and downs of our mental and emotional stability, and the exorcism of the darkness within.





### Marta Corada

Marta Corada is a photographer and artist whose documentary work blurs the boundaries between storytelling and fact. Her constructed images are based on documentary photographs of real situations, which are later manipulated by the artist.

This approach frees photography from restrictions of the single exposure, using enduring compositional methods to select characters and visual elements that all existed in the place that we see them, just not all at the same time. In this way she produces highly considered images from documentary photographs, using digital and manual collage techniques.



### Ronan Salaun (Fifi)

Salaun studied Fine art at Kensington and Chelsea College and BA Fine arts in Sculpture and Installation at Sir John Cass School of Art in London. He is a multimedia artist and works with painting, installations and performances. He started exhibiting his painting in 2009 at the Air Gallery in Cork Street, quickly followed by an exhibition at La Galleria Pall Mall. He has since been exhibiting on a regular basis all over London. More recently he has been showing at The Raven Art Society in London and was part of "La Grace du Ciel" exhibition homage to the singer Grace Jones.

His paintings reflect his childhood in Noumea and are inspired by his experience living in England. Salaun's work is very expressive with a lot of texture giving the beholder an idea of movement he likes to portray women's bodies, icons, mythological figures and animals. Colours are very important in his work, reflecting strong emotions. Depending on his mood his work can be very abstract or more figurative.

Salaun allows himself the freedom to identify wholly with each painting, some seem anonymous with the women depicted without heads or as shadows allowing the viewer to imagine these figures in their own worlds, or to personify them and give them a unique narrative.



### Svetlana Grishina

Grishina's dinosaurs are essentially fractal Yin-Yangs. What constitutes the work is suspension of dualism, which repeats itself on many different layers. The base idea is conjunction of Evolutionism and Creationism, two myths about the origins of humanity and two supposedly contradictory belief systems. These myths happen to correlate in several points. The extinction of dinosaurs was one of the main pre-requisites for humanity to occur, Nietzsche's statement that "God is dead" was one of the main pre-requisites for contemporary thought. Lacan claims that the true formulae of atheism is not "God is dead", but "God is unconscious" and there's a neuroscientific theory that names the most unconscious part of our brains "reptilian brain". Formally and visually, this suspension of dualism happens as well.

The works are simultaneously 2D and 3D, as puzzles they are simultaneously collected and not-collected. Each individual detail is fixed with a pin, but its shadow changes. Visually, they are simultaneously bright and flimsy, and white-minimalist-cubes. In the process of the making the work there's the lazy act of using a ready-made and meticulous painting with a tiny brush.

# CONSTRUCTED ART

### Bagman and Robin Art

For Lee, art and creative work is a subject with many definitions. Using acrylic as a medium, he tends to reminisce to get inspiration and create his work. Be it remembering all his scribbles on school books full of monsters, minute creatures, strange flora, fauna and robots in an apocalyptic world.

To sum up, his works are a juxtaposition of playfulness, amusement, danger and mysteriousness.

If he has created a story, giving the viewer a lasting impression, inspiring and evoking memories, he has done his job.







### Janet Cawthorne

The long-term study and teaching of both psychology and art have fuelled a lifelong fascination with mental processes, perceptions, communication, emotions and human relationships, and Cawthorne endeavours to express these in her work. Recent material has centred on the notions of empathy, ambiguity, differing individual perceptions, mental illness and memory.

Cawthorne believes in the need for a compassionate, inclusive and collaborative society, and also in the power of art to support, enhance and communicate valuable ideas and encourage a philosophical approach.



### Oya Allen

With her background in Painting, London born artist, Allen, often takes an interdisciplinary approach in her practice. Past projects have manifested through the archival medium, investigating ideas that are underscored by a psychoanalytic enquiry into memory, mourning and place. Sometimes utilising the museum as a mode for display, Allen has reconsidered the conceptualisation of the archive as a hierarchical framework for the organisation and display of objects, extending it to one that is decentralised and which considers and frames personal processes and relations of human encounters. In referencing and challenging notions of imperialism and colonialism, her intention has been to investigate the role of subjectivity in sociocultural and historical formations.

More recently, Allen has carried forward various strands of enquiry that emanate from her 'archaeology of loss' to rethink the significance of previous 'excavations' within a new framework that is underpinned by Five Elements theory, which she draws on from her knowledge of and practice in Shiatsu and Chinese Medicine. Revisiting ideas that centre on haptic knowledge, she recognises earlier observations as premonitions of her recent exploration into energy work/ medicine and by extension, metaphysics.



### Kristina Agnez

Kristina Agnez is a Lithuanian-born London-based contemporary artist working with mixed media on large scale canvases, moulding layers of organic and kitsch textures to create surreal maps of worlds inspired by fairy tales and pagan influentials. Her Sculptural paintings were inspired by the book "Women Who Run With The Wolves by Clarissa Pinkola Estes who awakens the desire to find a long lost connection with nature, intuition and different understanding of female body issues.

The works are the birds eye view of a fantastic imagined planet with its volcanoes and craters, they are stenographic landscapes, backgrounds existing behind the characters of fold and fairy tale stories.



# FUSION OF STYLES

### Julie Duffy

Preferring not to be pigeon-holed into a particular style or subject, the work of Northern Ireland based artist Duffy is charged with passion, presence, colour and opinion. In a vision of creativity and imagination, she creates art that explores many themes in a fusion of bold and softer pieces. This emerging artist is intrigued by the human mindset and curious perceptions within our 21st Century lives. Her dynamic paintings and thought provoking sculptures are inspired by people, places and a quest for the unknown. Duffy invites the viewer on an interesting journey to enjoy the differing forms, concepts and atmospheres she creates through her art.





### Loredana Denicola

Loredana Denicola is a London based photographer. Her art focuses on social documentary and portraiture and seeks to explore the relationship between subject and photographer.

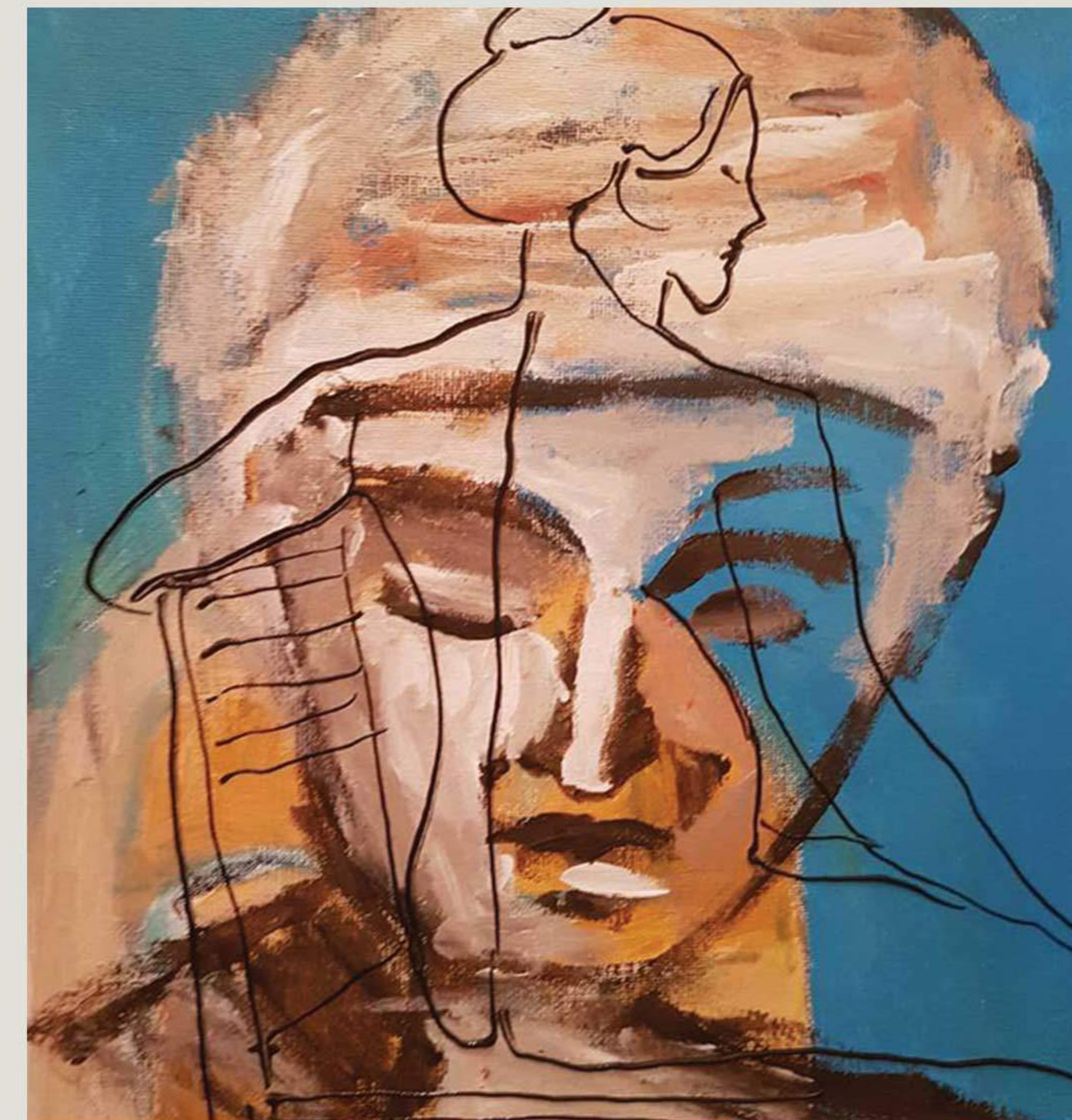
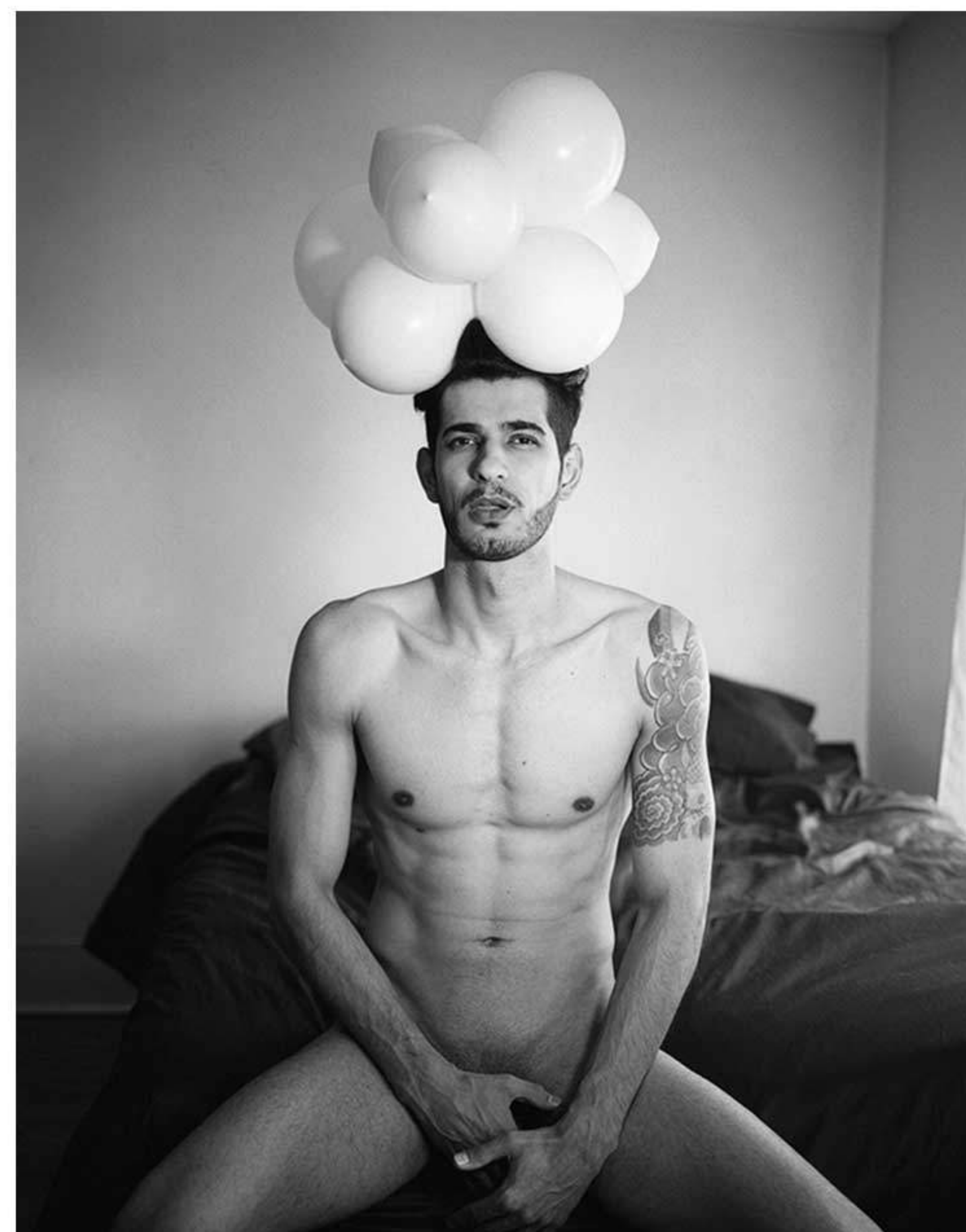
Since 2014 she uses photography as a tool for her personal evolution which began with the discovery of her 'psyche' and then comprehension, destruction and re -construction, using her artistic work as a powerful means of self-analysis, creating dialogues between herself and others.

# SELF-ANALYSIS

'I am your mirror' is her first photography project that clearly represents this process in which, establishing an intimate connection with strangers Loredana employs Photography as a mirror to reveal some of the repressed feelings of both parts involved (the stranger & photographer).

The result? An attack to the Identity's concept. Do we like what we see?

Loredana largely shoots with a film camera allowing her process to be organic rather than being predefined by fixed ideas.

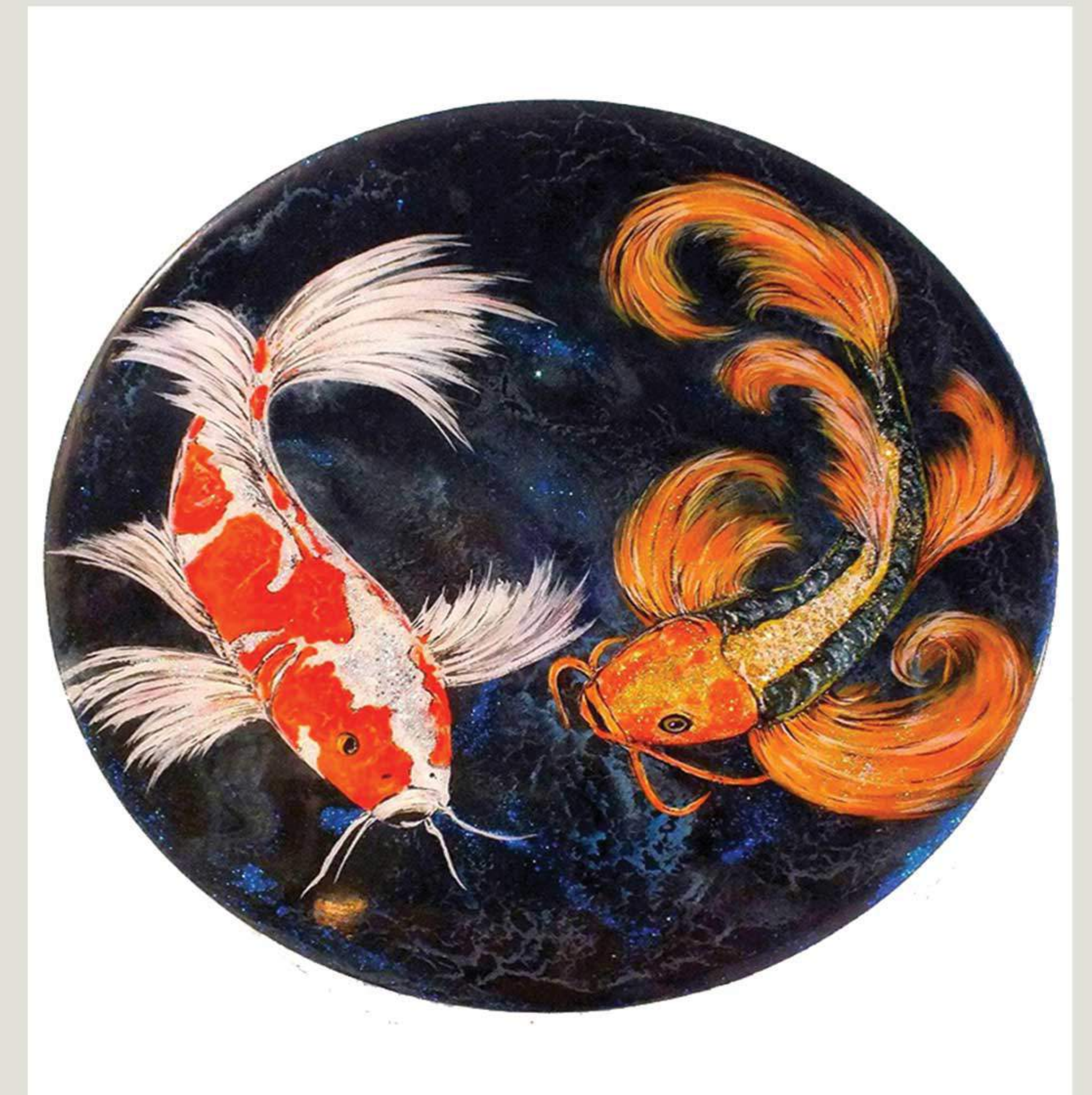


### Luan

Luan used to build his own world, his own scenarios. His grandma, a gorgeous Russian, always used to tell him: you're such an idealist artist.

Luan studied psychology at university and then went on to become a hairdresser. Luan painted hair, falling in love with colour. One day this love of colour moved towards art and Luan started to draw. He has not looked back since. Luan took classes but felt his creativity was fenced in. He continued his studies through reading all sorts of books. How to draw an eye, a nude, a horse. Luan slowly met with acrylics, a medium he loves and with who he is still having an affair with. Now adding mediums such as ink to his repertoire.

He often see's his paintings and thinks 'I like it... although it's strange, and he has discovered that he will always be an artist, as when he paints he is true to Luan.



### Elizabeth Fisher-Grant

Fisher-Grant is a self-taught artist and her paintings are created using an exciting range of media often embellishing with very intricate detail. She loves the challenge of trying something new, which is reflected in the diversity of her work. Her use of different media and love of colour has continuously developed and evolved together with her use of resin. She loves the incredible shine and reflective properties of the resin often painting in between layers and each completed piece is coated with a glassy like finish. For her these one off, unique pieces of art have a depth and beauty like nothing else. They have to be seen to be appreciated. Photographs just do not do them justice.

Fisher-Grant draws much of her inspiration from the Far East as her mother was born in Shanghai. From the Geisha, koi and blossoms to the magnificent red crowned cranes, these subjects have such beauty and grace which fill her mind with endless possibilities.

Working flat on the table she has to constantly move around the canvas due to the fluid dynamics of the paint, using this energy to explore the evolving abstract elements of each piece.



### Jo Holland

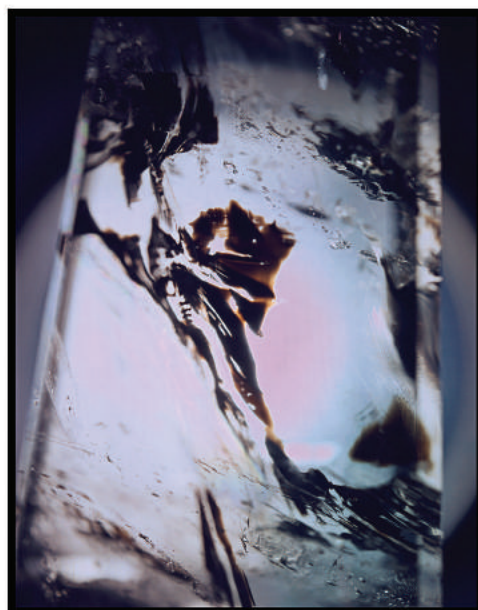
Jo Holland is one of the few remaining pioneers in the field of photographic art. She is known for creating unique images on Ilfochrome paper using her signature process solely within the darkroom, working directly with objects, colour and light.

Holland directs the transmitted and reflected light that passes through and bounces off her subjects, and records images onto the light sensitive paper. Each print is an unrepeatable photographic moment, translating as transcendental beauty.

# REFLECTED LIGHT

For this Flux exhibition, Jo has created brand new work, following her journey with "cameraless" photography. By using just flowers and out of date black and white photo paper, composing and exposing her glass plates over a twenty four hour natural light period of time, she has created something quite unique with her analogue Lumin prints.

Her creative approach is heightened through the meditative process of Lumin printing being digitally enhanced, that finally culminates as – Transformations of Love.



### Tony Nero

Nero originally trained as a graphic designer and worked in the music industry producing record sleeves and printed materials for a period that exceeded 20 years. Part of this time was spent running his own graphic studio.

Nero's work is very diverse in subject matter and he works in various different mediums such as pencils, charcoal, pastels, oils, watercolour and stipple-dot drawings.

Since Nero's first solo exhibition in 2008 he has been showing work regularly and is pro-active in promoting local art in Peterborough. Pieces of his work are now held in private collections across various parts of the world. As well as producing a quarterly newsletter, he is also on the committee of two local art groups.

One of Nero's biggest achievements to date was showing his Black Heroes collection of portraits in an exhibition at Wembley Stadium. His most recent solo exhibition entitled 'Mixed Emotions #wonderfitsart' was held at Peterborough's City Gallery. Nero was honored to show my work at the first Flux exhibition and is really excited to be showing at Flux again this year.



### John Hobbs

Hobb's grew up in a small Lancashire town, gay and isolated, a face that didn't fit and he lived in his head, in his imagination, he found an identity through creative expression. He developed an eye for detail and loved to look; looking became and still is absolute pleasure, a pure joy. Art was an otherworldly place; he knew his destiny was to be an artist.

Hobb's two transformative years were spent in Blackpool studying Foundation Art and filled him with passion. A Fashion BA followed he also studied photography seduced by the magic of the processes and the excitement of instant image creation. Coming back to painting after a detour, Hobb's work holds reference to these other influences; a love of texture and surface, of precision and graphic simplicity, a love of process and craft. Also inherent is the visceral connection with his early sense of isolation and emptiness, a chaotic beauty crystallized under an immaculate resin surface.

Hobb's is continually searching and learning, pushing further with each painting in a desire to produce something extraordinary.



# CAPTURING BEAUTY

## Miguel De Melo

De Melo produces dark, psychedelic daydreams; a sinister reverie of beautiful horrors and exquisitely tempting fantasies; a twisted reality that binds pleasure to pain, exposing hidden desires buried deep within our souls.

Capturing beauty in darkness, the awkward and the insensitive. It exposes over exaggerated surrealistic views of feelings and disturbed personalities, an hallucinogenic explosion of bright and earthy colours mixed with realistic twisted textures.



## Jason Pengelly

Pengelly Uses various methods of stencilling to form simple yet very eye catching pieces . Using the strong contrasts of black and white or inviting strong colours to fight against each other just as effectively as using them to compliment . As time goes by and his confidence grows Pengelly finds himself not being tied to one specific genre , but getting into paper/canvas/board whatever happens to occupy him.

Pengelly is becoming increasingly interested in the challenge of taking the image that's manifesting in his mind and totally deconstructing it . When it comes to reconstruction he wants to piece it back together in one of two ways . Either, using a minimal amount of detail to encourage the viewer to think deeper about what sits before them . To encourage some artwork/viewer interaction. Or, to reconstruct in a manner which only comes together when you're stood where he wants you to stand , it's almost as if the artwork is holding court and demanding your full attention (no sideways glances allowed) and is insisting you stand precisely where needed to enjoy the art in its full glory.



## Natalie Ioannou

Ioannou's artwork is greatly inspired by nature and its interaction with our man-made surroundings. The striking and bold movements of birds are the main subjects for her paintings. By practicing Taxidermy she has gained a feel for the movement of birds, which has heavily influenced the work.

While growing up on the outskirts of London, a topical issue was the infringement of building developers on untouched land, serving the needs of an ever-growing human population. Less adaptable animals continue to decline in number, whereas those who are well suited to city life are seen abundantly around London.

Throughout Ioannou's work she tries to remind the viewer of the nature sharing our cities and homes, particularly crows, which thrive in our urban jungle. Many consider crows as vicious birds and bad omens, but she feels they compliment the loud harshness one can experience on the streets of London. From this Ioannou created her first project, which is titled "The Wings of Life".



### Sara Sutton

Sutton is a contemporary artist from North London, she draws inspiration from her time spent in music subcultures and fuses classic and iconic images with urban and pop art.

Her works typically rock a London theme using people and cityscapes from everyday life. Preferring to paint freehand with oil paint onto canvas this gives her work an edgy vibe. Sara exhibits throughout London regularly.



### Sebastian Marc Graham

Graham is an up and coming artist who captures the natural light and colours of his most loved environment. The warmth of the southernmost tip of Europe and its flowers and flora is unlike anywhere else.

To translate this uniqueness Graham's direct painting method or "alla prima" gives his art an almost idealistic but immediate quality. His preferred medium is watercolours, pencil and Ink. After graduating with honours in Politics and International Relations, Graham is pursuing a greater understanding of identity and how we have a natural desire to escape the day to day.

His watercolours paintings are devoid of negativity and darkness and instead give the illusion of Eden and fantasy. As he says "I want people to forget the world and dive into my fantasy even it only lasts for a few seconds."



### Tommy Gurr

Gurr is a visual artist from Whitstable, Kent. After attending Kent Institute of Art and Design (KIAD) and The University for Creative Arts (UCA) he combined his art with his second great love, travelling, which has taken him across the globe, from Africa to OZ. His stencil murals can be found in Camden and as far as the streets of Siem Reap, Cambodia, where he has featured as an artist in residence for the past two years.

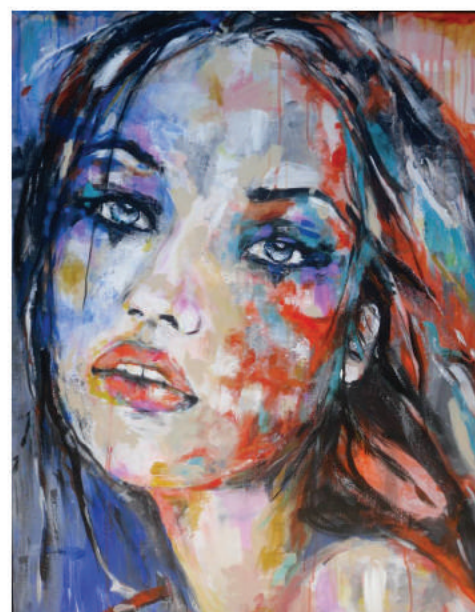
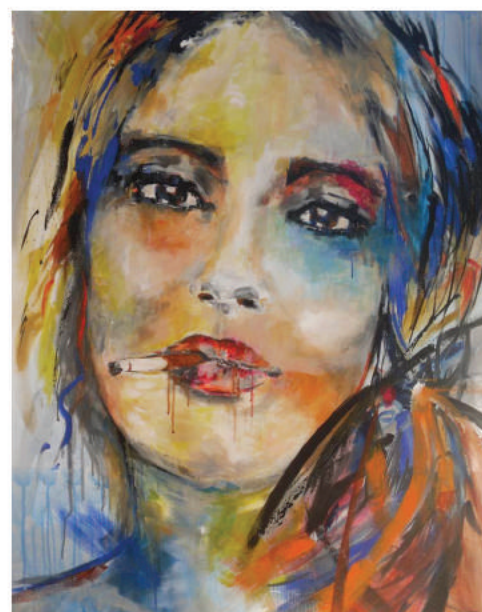
Returning to the UK this year, once again Tommy was invited to feature at the Henley Festival where alongside exhibiting he performed a live 3-day paint to festival goers. His experimentation with unconventional media and 'play on words' looks set to continue through his new collection for 2016/17, which we will look forward to featuring at this years Flux Exhibition at the Truman Brewery.

# HEART AND SOUL

### Marie-Blanche Giannorsi

Giannorsi is a French artist who resides in Sanary Sur Mer, a beautiful village located between Bandol and Saint-Tropez. Giannorsi is an incredible artist who displays her heart and soul on canvas.

Connecting with her art later in her career she is certainly making up for lost time with an impressive body of work that displays a unique style and the ability to display immense beauty and emotion. Painting is primarily a means to know herself better and to become better. Painting is her opening to the world.





### Eric Sher

Eric Sher was born in Johannesburg, South Africa and has studied fine art and illustration. His career includes exhibiting his artworks at galleries throughout London and South Africa in solo and group exhibitions. Many of his artworks form part of corporate and private collections.

As a professional artist he created a drawing of Chancellor House which has been endorsed by both the Nelson Mandela Foundation and the Johannesburg Development Agency. He is one of the top 20 South African artists that has been selected to participate in the We Love Mandela exhibition which has travelled to London, Cape Town and Johannesburg.



### Yuichi Ikethata

Yuichi Ikethata from Japan who produces sculptures of decomposed body parts, he then photographs the sculptures and merges them into surreal, powerful images that are both beautiful and haunting. Yuichi exhibits worldwide and has won numerous awards for his unique artwork.



### Zoë Landau Konson

Zoë Landau Konson is a London based artist and designer who creates large unconventional, eye catching sculptures that are commemorative and intriguing.

Her method of construction consists of making multiples of similar shape and uniting them in a final assemblage. It's an incredibly repetitive way of working but compulsive. Her work is largely knitted or crocheted, using the only two crochet stitches her grandmother taught her. Sometimes, wrapped and stitched textiles. Zoë is also creating a body of work using hair and architectural structures. Both hair and architecture seem perfect metaphors for some of the themes that are central to her work, as well as embodying a sense of time and history.

In 2010 Zoë was shortlisted for the Art of Giving exhibition at the Saatchi Gallery and since then she has been making sculpture full time. She is starting to gain an international reputation with work in private collections in the USA and several pieces on display at The Fries Museum in Holland. Zoë's work has been included in numerous London shows



# MEMORIES IN ART

### Meme Marey

The images Meme paints and works with are extracted from emotional responses to memories and actual events that have taken place in her life.

This current body of work deals with a female form, often sitting on a stool in different positions.

Meme wants to convey the feeling of thinking the same thought over and over again with shifts of movement but not really moving like a memory of something that just won't go away that delves into the loneliness of thought and the memory of what was and still is.





### Sheera Jacobs

Sheera Jacobs was born south Africa grew up in Israel and currently lives and works between London and tel Aviv. Jacobs graduated from the Slade School of Fine Art.

Jacobs practise consists of painting, drawing and photography works. In all of her work she tries to represent images of people or of landscapes which do not exist as stable or coherent in their place. Instead they are an object of movement and flux between ideas of time, memory, culture identity and space!



### Jody Little

After the slight distraction of a career in financial services I have been working full-time as a professional artist since graduating in 2013 from Camberwell College of Arts, London, with an MA in Printmaking (Merit).

Printmaking techniques underpin my practice and I use these along with painting, drawing and collage. Portraits and figures are my main interest and I love to use old photographs as inspiration whether they are of Hollywood legends or of long lost ancestors from my family tree.



### Artswati

Artswati London is a visual artist of Indian origin, based in London. She is the winner of the Pure Prize 2015.

"My eyes taste colour like my tongue tastes spice: fresh, vast, limitless. Minimalist forms feeds my aesthetics and I blur the lines between painting and sculpture. Lured by the belief in complete desensitising of the eye of the unnecessary chaos of details, my work graduates to leave a blissful positive experience.

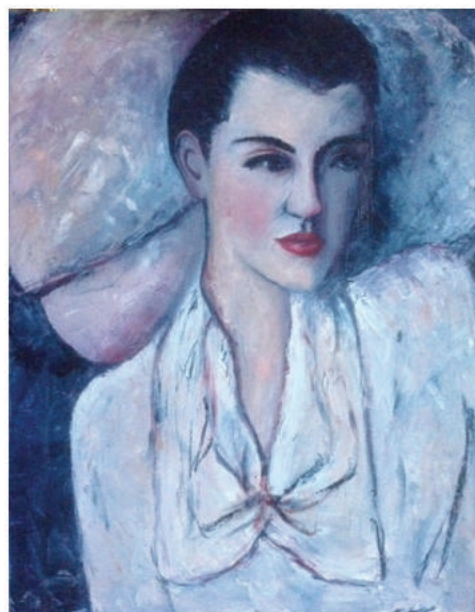
Swollen with the Indian sensibility of pure colour, my paintings treat the colour itself as the subject. Its broken, blurred, repeated and stylised to suit the intense emotions. Impregnated with colour at its core, each piece is slowly translated and progressed to give birth to my own visual language comprising of emotionally charged marks. It is when logic and self-awareness fades that the eyes assumes command to induce an intuitiveness to the work'. Artswati

# CULTURAL IDENTITY

### Antonia MacTavish

Beauty, liberation, freedom and a sense of space are the elements MacTavish strives to portray in her paintings. She is drawn to her subjects by their artistic performance or expression. Inspired by the colourful characters she meets and her love of the extraordinary.

Capturing moments from memories and imagination and using photos for inspiration she combines the brush and palette knife to create works with texture and contrast. Originally from Yorkshire, she now resides in London.





**Audere Capital** was formed following the sale of a regional publishing company and also an online recruitment web platform by founder Richard Alvin.

Audere Capital, initially known as Just Ralvin Ltd was a holding company to manage Richard's new business ventures in the Capital Business Media group, but quickly the entrepreneurial spirit took over and following other strategic investments and spending time as a non-executive director and mentor to some startup companies the decision was taken to expand the portfolio of opportunities. Audere Capital now focuses on investment opportunities primarily in startup companies in the media, technology and fashion sectors and at end of Q2 2013 investments made-to-date totalled £1.9Million

Whilst many deals see Audere Capital as a sole investor it has joined with others either as lead investor or a syndicate member and suggests that partners join Angels Den or Beer & Partners as the company has invested in businesses via both angel and funding networks. Audere Capital also provides advice, seed funding and mentoring to people looking to start their own business, but who are possibly disadvantaged in some way vis the Princes Trust and the Capital Business Media Foundation.

Audere Capital is also a proud supporter of StartUp Britain, The Princes Trust & Wayra UK to help grow the UK startup business sector.



# FLUX SPONSORS

Speaking about the sponsorship, Audere Capital Chairman Richard Alvin said: "As someone who both enjoys art and also sees it as an immensely attractive investment opportunity I am so pleased that we were able to support Flux founder Lisa Gray in both her second and the current exhibition. After attending the event in February and seeing some of the excellent pieces available to purchase – one of which I did purchase – from up-and-coming artists alongside established works it was something that I felt that we had to support."

"Art, along with classic cars has returned as a credible alpha investment option and I genuinely believe that you should only buy art because you like it. However at a time when the rate of return is so low on cash based investments then investing, like Charles Saatchi has done to great success, in up-and-coming artists is definitely something to take very seriously and at Flux in February the walls were filled with works at various price points all with the potential to be the next Tracey Emin or Damien Hirst."



BLOOM Gin is a floral London Dry Gin, inspired by nature. Master Distiller Joanne Moore, who celebrates her 10th Anniversary in 2016 as Master Gin Distiller, chose the flowers of chamomile and honeysuckle, with the citrus fruit pomelo, to make up the three main botanicals for BLOOM – each one contributing to the delicate gin drinking experience.

BLOOM Gin is distilled by the oldest gin distillers in the UK, where they have been producing fine gin, since 1761. G&J Distillers is known worldwide for the superior quality of its spirits. During its 250 year history, only seven Master Distillers have fulfilled the role which is now carried out by Joanne. BLOOM Gin has won many awards and medals for its superior taste and quality, including a Double Gold at the prestigious San Francisco World Spirits Competition.

BLOOM Gin is distilled in a traditional copper pot still, overseen by Master Distiller Joanne, and uses demineralised fresh spring water to reduce the spirit to a final bottling of 40% ABV.

Appearance: Clear and bright. Nose: A light floral gin, with traditional perfume and earthy aromas; the predominant notes are chamomile, pomelo and honeysuckle. Taste: Slightly sweet with a very smooth mouth feel and a citrus finish.

